

## Recombinant Mouse Egfl7 protein, His & T7-tagged

**Cat. No.** Egfl7-1874M    **Lot. No.** (See product label)

### SPECIFICATION

|                         |   |
|-------------------------|---|
| <b>Product Overview</b> | Recombinant Mouse Egfl7 aa. (Glu22~Leu275 (Accession # Q9QXT5)) fused with N-terminal His & T7 tag was produced in E. coli cells.   |
| <b>Species</b>          | Mouse   |
| <b>Source</b>           | E.coli  |
| <b>ProteinLength</b>    | Glu22~Leu275  |
| <b>Form</b>             | Freeze-dried powder   |
| <b>Molecular Mass</b>   | Predicted Molecular Mass: 31.2kDa   |
| <b>Endotoxin</b>        | <1.0EU per 1ug (determined by the LAL method)   |
| <b>Purity</b>           | >90%  |
| <b>Applications</b>     | SDS-PAGE; WB; ELISA; IP.  |
| <b>Stability</b>        | The thermal stability is described by the loss rate. The loss rate was determined by accelerated thermal degradation test, that is, incubate the protein at 37°C for 48h, and no obvious degradation and precipitation were observed. The loss rate is less than 5% within the expiration date under appropriate storage condition. |
| <b>Storage</b>          | Avoid repeated freeze/thaw cycles. Store at 2-8°C for one month. Aliquot and store at   |

 Tel: 1-631-559-9269    1-516-512-3133

 Email: [info@creative-biomart.com](mailto:info@creative-biomart.com)     Fax: 1-631-938-8127

 45-1 Ramsey Road, Shirley, NY 11967, USA

-80°C for 12 months.

**Storage buffer** Supplied as lyophilized form in PBS, pH7.4, containing 5% trehalose, 0.01% sarcosyl.

**Reconstitution** Reconstitute in sterile PBS, pH7.2-pH7.4.

**Isoelectric Point** 7.9

## GENE INFORMATION

**Gene Name** [Egfl7 EGF-like domain 7 \[ Mus musculus \(house mouse\) \]](#)

**Official Symbol** [Egfl7](#)

**Synonyms** Egfl7; EGF-like domain 7; Zneu1; VE-statin; epidermal growth factor-like protein 7; EGF-like protein 7; NEU1 protein; NOTCH4-like protein; multiple EGF-like domains protein 7; multiple epidermal growth factor-like domains protein 7; vascular endothelial statin

**Gene ID** [353156](#)

**mRNA Refseq** [NM\\_001164564.1](#)

**Protein Refseq** [NP\\_001158036.1](#)

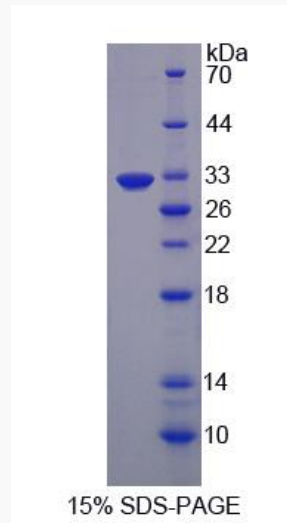
**UniProt ID** [Q9QXT5](#)

 Tel: 1-631-559-9269 1-516-512-3133

 Email: [info@creative-biomart.com](mailto:info@creative-biomart.com)  Fax: 1-631-938-8127

 45-1 Ramsey Road, Shirley, NY 11967, USA

**SDS-PAGE**



 Tel: 1-631-559-9269 1-516-512-3133

 Email: [info@creative-biomart.com](mailto:info@creative-biomart.com)  Fax: 1-631-938-8127

 45-1 Ramsey Road, Shirley, NY 11967, USA