

## Recombinant Mouse Egfr protein, His-tagged

Cat. No. Egfr-5224M Lot. No. (See product label)

### SPECIFICATION

<b>Product Overview</b>	Recombinant Mouse Egfr Protein (25-647aa), was expressed in human 293 cells (HEK293) with C-terminal His tag.
<b>Species</b>	Mouse
<b>Source</b>	HEK293
<b>ProteinLength</b>	25-647 aa
<b>Description</b>	The epidermal growth factor receptor (EGFR; ErbB-1; HER1) is the cell-surface receptor for members of the epidermal growth factor family (EGF-family) of extracellular protein ligands. The epidermal growth factor receptor is a member of the ErbB family of receptors, a subfamily of four closely related receptor tyrosine kinases: EGFR (ErbB-1), HER2/c-neu (ErbB-2), Her 3 (ErbB-3) and Her 4 (ErbB-4). Mutations affecting EGFR expression or activity could result in cancer.
<b>Predicted N Terminal</b>	Leu25
<b>Form</b>	Lyophilized from 0.22 µm filtered solution in PBS, pH7.4, 10% trehalose.
<b>Molecular Mass</b>	The protein has a calculated MW of 71.2 kDa. The protein migrates as 86-110 kDa under reducing (R) condition (SDS-PAGE) due to glycosylation.
<b>Endotoxin</b>	Less than 1.0 EU per µg by the LAL method.

 Tel: 1-631-559-9269 1-516-512-3133

 Email: [info@creative-biomart.com](mailto:info@creative-biomart.com)  Fax: 1-631-938-8127

 45-1 Ramsey Road, Shirley, NY 11967, USA

<b>Purity</b>	>95% as determined by SDS-PAGE.
<b>Storage</b>	<p>For long term storage, the product should be stored at lyophilized state at -20 centigrade or lower.</p> <p>Please avoid repeated freeze-thaw cycles.</p> <p>This product is stable after storage at:</p> <p>-20 to -70 centigrade for 12 months in lyophilized state;</p> <p>-70 centigrade for 3 months under sterile conditions after reconstitution.</p>
<b>Reconstitution</b>	It is recommended that sterile water be added to the vial to prepare a stock solution of 0.2 ug/ul. Centrifuge the vial at 4°C before opening to recover the entire contents.

## GENE INFORMATION

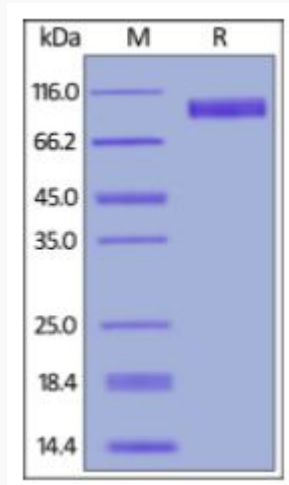
<b>Gene Name</b>	<a href="#">Egfr</a>
<b>Official Symbol</b>	<a href="#">Egfr</a>
<b>Synonyms</b>	EGFR; epidermal growth factor receptor; waved 2; avian erythroblastic leukemia viral (v-erb-b) oncogene homolog; Wa5; wa2; Erbb; Errp; wa-2; A1552599; 9030024J15Rik
<b>Gene ID</b>	<a href="#">13649</a>
<b>mRNA Refseq</b>	<a href="#">NM_007912</a>
<b>Protein Refseq</b>	<a href="#">NP_031938</a>
<b>UniProt ID</b>	<a href="#">Q01279</a>

 Tel: 1-631-559-9269 1-516-512-3133

 Email: [info@creative-biomart.com](mailto:info@creative-biomart.com)  Fax: 1-631-938-8127

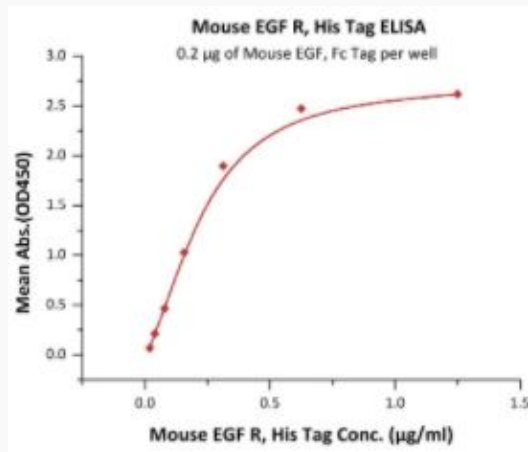
 45-1 Ramsey Road, Shirley, NY 11967, USA

**SDS-PAGE of Egfr-5224M**



Mouse EGF R, His Tag on SDS-PAGE under reducing (R) condition. The gel was stained overnight with Coomassie Blue. The purity of the protein is greater than 95%.

**Bioactivity-ELISA of Egfr-5224M**



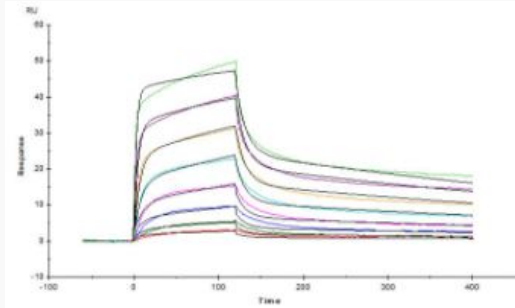
Immobilized Mouse EGF, Fc Tag at 2 µg/mL (100 µL/well) can bind Mouse EGF R, His Tag with a linear range of 0.02-0.313 µg/mL (QC tested).

Tel: 1-631-559-9269 1-516-512-3133

Email: [info@creative-biomart.com](mailto:info@creative-biomart.com) Fax: 1-631-938-8127

45-1 Ramsey Road, Shirley, NY 11967, USA

### Bioactivity-SPR



Captured Mouse EGF R, His Tag on CM5 Chip via anti-His antibody can bind Mouse EGF, Fc Tag with an affinity constant of 5.44 nM as determined in SPR assay (Biacore T200) (Routinely tested).

 Tel: 1-631-559-9269 1-516-512-3133

 Email: [info@creative-biomart.com](mailto:info@creative-biomart.com)  Fax: 1-631-938-8127

 45-1 Ramsey Road, Shirley, NY 11967, USA