

## Recombinant Mouse Egr1 Protein, His-tagged

Cat. No. Egr1-629M Lot. No. (See product label)

### SPECIFICATION

<b>Product Overview</b>	Recombinant Mouse Egr1(Gln273~Ser431) fused with His tag at N-terminal was expressed in E. coli.
<b>Species</b>	Mouse
<b>Source</b>	E.coli
<b>ProteinLength</b>	Gln273~Ser431
<b>Description</b>	Egr1 played an important role in many functions.
<b>Form</b>	20mM Tris, 150mM NaCl,pH8.0, containing 1mM EDTA, 1mM DTT, 0.01% SKL, 5% Trehalose and Proclin300.
<b>Molecular Mass</b>	22.2kDa
<b>Identity</b>	Reconstitute in 20mM Tris, 150mM NaCl (pH8.0) to a concentration of 0.1-1.0 mg/mL. Do not vortex.
<b>Endotoxin</b>	<1.0EU per 1g (determined by the LAL method)
<b>Purity</b>	> 97%
<b>Applications</b>	Positive Control; Immunogen; SDS-PAGE; WB. If bio-activity of the protein is needed, please check active protein

 Tel: 1-631-559-9269 1-516-512-3133

 Email: [info@creative-biomart.com](mailto:info@creative-biomart.com)  Fax: 1-631-938-8127

 45-1 Ramsey Road, Shirley, NY 11967, USA

**Stability** The thermal stability is described by the loss rate. The loss rate was determined by accelerated thermal degradation test, that is, incubate the protein at 37 centigrade for 48h, and no obvious degradation and precipitation were observed. The loss rate is less than 5% within the expiration date under appropriate storage condition.

**Storage** Avoid repeated freeze/thaw cycles. Store at 2-8 centigrade for one month. Aliquot and store at -80 centigrade for 12 months.

**Reconstitution** Reconstitute in PBS or others

## GENE INFORMATION

**Gene Name** [Egr1 early growth response 1 \[ Mus musculus \]](#)

**Official Symbol** [Egr1](#)

**Synonyms** EGR1; early growth response 1; early growth response protein 1; Krox-24 nuclear protein; transcription factor Zif268; zinc finger protein Krox-24; nerve growth factor-induced protein A; egr; TIS8; Zenk; Egr-1; NGFIA; Zfp-6; ETR103; Krox-1; Krox24; NGF1-A; NGFI-A; Zif268; Krox-24; A530045N19Rik;

**Gene ID** [13653](#)

**mRNA Refseq** [NM\\_007913](#)

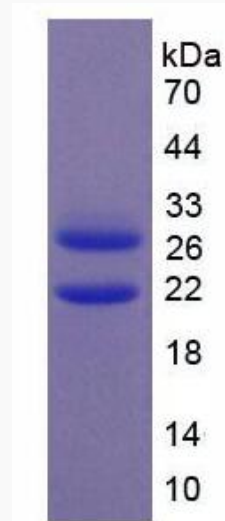
**Protein Refseq** [NP\\_031939](#)

**UniProt ID** [P08046](#)

 Tel: 1-631-559-9269 1-516-512-3133

 Email: [info@creative-biomart.com](mailto:info@creative-biomart.com)  Fax: 1-631-938-8127

 45-1 Ramsey Road, Shirley, NY 11967, USA



Tel: 1-631-559-9269 1-516-512-3133

Email: [info@creative-biomart.com](mailto:info@creative-biomart.com) Fax: 1-631-938-8127

45-1 Ramsey Road, Shirley, NY 11967, USA