

Recombinant Mouse Eln protein, His-GST-tagged

Cat. No. Eln-6834M **Lot. No.** (See product label)

SPECIFICATION

Product Overview	Recombinant Mouse Eln protein(Pro266~Gly443), fused with N-terminal His and GST tag, was expressed in E. coli.
Species	Mouse
Source	E.coli
ProteinLength	266-443 a.a.
Tag	His&GST
Form	PBS, pH7.4, containing 0.01% SKL, 5% Trehalose.
Bio-activity	<p>Elastin (ELN) is an extracellular matrix (ECM) protein responsible for the extensibility and elastic recoil of many vertebrate tissues. ELN is abundant in elastic tissues, and tissues rich in elastin include the aorta and major blood vessels, the lungs, elastic ligaments, tendons and the skin. ELN can bind the elastin receptor complex and other receptors and stimulate migration and proliferation of monocytes and skin fibroblasts. Elastokines can also contribute to cancer progression. Deletions and mutations in this gene are associated with supravalvular aortic stenosis (SVAS), autosomal dominant cutis laxa. Decorin (DCN), an extracellular matrix (ECM) protein, is one of targets of ECM. Thus a functional binding ELISA assay was conducted to detect the interaction of recombinant mouse ELN and recombinant human DCN. Briefly, ELN was diluted serially in PBS with 0.01% BSA (pH 7.4). Duplicate samples of 100 µl were then transferred to DCN-coated microtiter wells and incubated for 1h at 37°C. Wells were</p>

 Tel: 1-631-559-9269 1-516-512-3133

 Email: info@creative-biomart.com  Fax: 1-631-938-8127

 45-1 Ramsey Road, Shirley, NY 11967, USA

washed with PBST and incubated for 1h with anti-ELN pAb, then aspirated and washed 3 times. After incubation with HRP labelled secondary antibody for 1h at 37°C, wells were aspirated and washed 5 times. With the addition of substrate solution, wells were incubated 15-25 minutes at 37°C. Finally, add 50 µL stop solution to the wells and read at 450/630 nm immediately. The EC50 for this effect is 0.068 ug/mL.

Molecular Mass	45.3kDa
Endotoxin	<1.0EU per 1µg (determined by the LAL method).
Purity	>95%
Storage	Avoid repeated freeze/thaw cycles. Store at 2-8°C for one month. Aliquot and store at -80°C for 12 months.
Reconstitution	Reconstitute in 10mM PBS (pH7.4) to a concentration of 0.1-1.0 mg/mL. Do not vortex.

GENE INFORMATION

Gene Name	Eln elastin [Mus musculus]
Official Symbol	Eln
Synonyms	ELN; elastin; tropoelastin; AI385707; AI480567; E030024M20Rik;
Gene ID	13717
mRNA Refseq	NM_007925

 Tel: 1-631-559-9269 1-516-512-3133

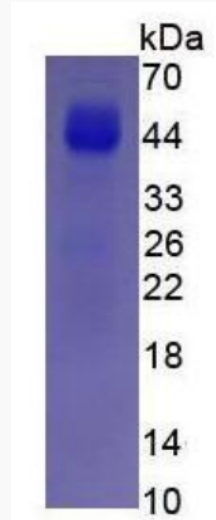
 Email: info@creative-biomart.com  Fax: 1-631-938-8127

 45-1 Ramsey Road, Shirley, NY 11967, USA

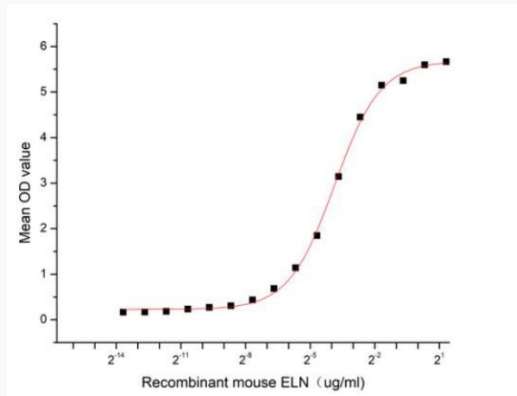
Protein Refseq

NP_031951

SDS-PAGE



Activity



 Tel: 1-631-559-9269 1-516-512-3133

 Email: info@creative-biomart.com  Fax: 1-631-938-8127

 45-1 Ramsey Road, Shirley, NY 11967, USA