

Recombinant Mouse Emcn Protein, His-tagged

Cat. No. Emcn-7403M **Lot. No.** (See product label)

SPECIFICATION

| | |
|-------------------------------------|--|
| Product Overview | Recombinant mouse Emcn protein (Glu20 to Ser190) with a 6 × His-tag was expressed in E. coli. |
| Species | Mouse |
| Source | E.coli |
| Description | Endothelial sialomucin, also called endomucin or mucin-like sialoglycoprotein, which interferes with the assembly of focal adhesion complexes and inhibits interaction between cells and the extracellular matrix. |
| Form | Lyophilized |
| Molecular Mass | ~ 18.78 kDa |
| AA Sequence | EDGKDVQNDSIPTPAETSTTKASVTIPGIVSVTNPNKPADGTPPEGTTKSDVSQTSLV TTINSLTTPKHEVGTTTEGPLRNESSTMKITVPNTPTSANANSTLPGSQNKTENQSSIR TTEISVTTQLLALPKITATSSASLTTAHTMSLLQDTEDRKIATTPSTTPSYSSSTRHHHH HH |
| N-terminal Sequence Analysis | EDGKDVQND |
| Purity | > 95 % by SDS-PAGE and Silver staining |

 Tel: 1-631-559-9269 1-516-512-3133

 Email: info@creative-biomart.com  Fax: 1-631-938-8127

 45-1 Ramsey Road, Shirley, NY 11967, USA

| | |
|-----------------------|---|
| Stability | Shelf life: one year from despatch. |
| Storage | Prior to reconstitution store at 2-8 centigrade. Following reconstitution store undiluted at 2-8 centigrade for one month or (in aliquots) at -20 centigrade for longer. Avoid repeated freezing and thawing. |
| Storage Buffer | 10 mM NaP, pH 7.0 |
| Reconstitution | Restore in water or PBS to a concentration of not lower than 100 µg/mL. |

GENE INFORMATION

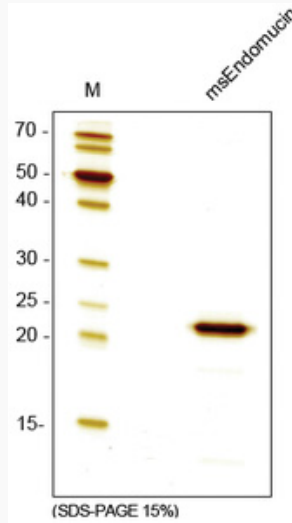
| | |
|------------------------|---|
| Gene Name | Emcn endomucin [Mus musculus (house mouse)] |
| Official Symbol | Emcn |
| Synonyms | Emcn; endomucin; Muc14; AI315669; 0610012K22Rik; endomucin; MUC-14; endomucin-1; endomucin-1/2; mucin 14, endothelial; mucin-14 |
| Gene ID | 59308 |
| mRNA Refseq | NM_001163522 |
| Protein Refseq | NP_001156994 |
| UniProt ID | Q9R0H2 |

 Tel: 1-631-559-9269 1-516-512-3133

 Email: info@creative-biomart.com  Fax: 1-631-938-8127

 45-1 Ramsey Road, Shirley, NY 11967, USA

SDS-PAGE



 Tel: 1-631-559-9269 1-516-512-3133

 Email: info@creative-biomart.com  Fax: 1-631-938-8127

 45-1 Ramsey Road, Shirley, NY 11967, USA