

## Recombinant Rat Eml2 protein, His & T7-tagged

Cat. No. Eml2-1554R    Lot. No. (See product label)

### SPECIFICATION

<b>Product Overview</b>	Recombinant Rat Eml2 aa. (Met1~Glu273 (Accession # Q6P6T4)) fused with N-terminal His & T7 tag was produced in E. coli cells.
<b>Species</b>	Rat
<b>Source</b>	E.coli
<b>ProteinLength</b>	Met1~Glu273
<b>Description</b>	Microtubule-associated protein that binds to the delta2 glutamate receptor.
<b>Form</b>	Freeze-dried powder
<b>Molecular Mass</b>	Predicted Molecular Mass: 33.9kDa
<b>Endotoxin</b>	<1.0EU per 1ug (determined by the LAL method)
<b>Purity</b>	>90%
<b>Applications</b>	SDS-PAGE; WB; ELISA; IP.
<b>Stability</b>	The thermal stability is described by the loss rate. The loss rate was determined by accelerated thermal degradation test, that is, incubate the protein at 37°C for 48h, and no obvious degradation and precipitation were observed. The loss rate is less than 5% within the expiration date under appropriate storage condition.

 Tel: 1-631-559-9269    1-516-512-3133

 Email: [info@creative-biomart.com](mailto:info@creative-biomart.com)     Fax: 1-631-938-8127

 45-1 Ramsey Road, Shirley, NY 11967, USA

<b>Storage</b>	Avoid repeated freeze/thaw cycles. Store at 2-8°C for one month. Aliquot and store at -80°C for 12 months.
<b>Storage buffer</b>	Supplied as lyophilized form in PBS, pH7.4, containing 5% trehalose, 0.01% sarcosyl.
<b>Reconstitution</b>	Reconstitute in sterile PBS, pH7.2-pH7.4.
<b>Isoelectric Point</b>	6.1

## GENE INFORMATION

<b>Gene Name</b>	Eml2 echinoderm microtubule associated protein like 2 [ <i>Rattus norvegicus</i> (Norway rat) ]
<b>Official Symbol</b>	Eml2
<b>Synonyms</b>	Eml2; echinoderm microtubule associated protein like 2; Emap; Eml1; Emap-2; echinoderm microtubule-associated protein-like 2
<b>Gene ID</b>	192360
<b>mRNA Refseq</b>	NM_138921.1
<b>Protein Refseq</b>	NP_620276.1
<b>UniProt ID</b>	Q6P6T4

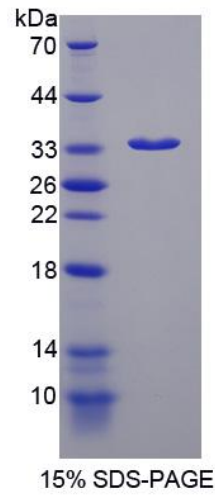
 Tel: 1-631-559-9269 1-516-512-3133

 Email: [info@creative-biomart.com](mailto:info@creative-biomart.com)  Fax: 1-631-938-8127

 45-1 Ramsey Road, Shirley, NY 11967, USA



SDS-PAGE



Tel: 1-631-559-9269 1-516-512-3133

Email: [info@creative-biomart.com](mailto:info@creative-biomart.com) Fax: 1-631-938-8127

45-1 Ramsey Road, Shirley, NY 11967, USA