

## GMP Recombinant Mouse Eno1 Protein, His-Tagged

Cat. No. Eno1-01M Lot. No. (See product label)

### SPECIFICATION

<b>Product Overview</b>	GMP Recombinant Mouse Eno1 Protein, His-Tagged was expressed in Escherichia coli cell-derived in an animal component free process under cGMP guidelines.
<b>Species</b>	Mouse
<b>Source</b>	E.coli
<b>Description</b>	Enables RNA binding activity and phosphopyruvate hydratase activity. Acts upstream of or within cellular response to interleukin-7; in utero embryonic development; and positive regulation of binding activity. Is extrinsic component of plasma membrane. Is expressed in several structures, including alimentary system; genitourinary system; nervous system; respiratory system; and sensory organ. Human ortholog(s) of this gene implicated in Alzheimer's disease. Orthologous to human ENO1 (enolase 1).
<b>Form</b>	Lyophilized
<b>AA Sequence</b>	SILRIHAREIFDSRGNPTVEVDLYTAKGLFRAAVPSGASTGIYEALELRDNDKTRFMG KGVSQAVEHINKTIAPALVSKKVNVEQEKIDKLMIEDGTENKSKFGANAILGVSLA VCKAGAVEKGVPLYRHIADLAGNPEVILPVPFNVINGGSHAGNKLAMQEFMILPVG ASSFREAMRIGAEVYHNLKNVIKEKYGKDATNVGDEGGFAPNILENKEALELLKTAIA KAGYTDQVVIGMDVAASEFYRSGKYDLDFKSPDDPSRYITPDQLADLYKSFVQNY VVSIEDPFDQDDWGAWQKFTASAGIQVVGDDLTVTNPKRIAKAASEKSCNCLLLKVN QIGSVTESLQACKLAQSNQVGMVSHRSGETEDTFIADLVVGLCTGQIKTGAPCRS ERLAKYNQILRIEEELGSKAKFAGRSFRNPLAKwith polyhistidine tag at the N-terminu

 Tel: 1-631-559-9269 1-516-512-3133

 Email: [info@creative-biomart.com](mailto:info@creative-biomart.com)  Fax: 1-631-938-8127

 45-1 Ramsey Road, Shirley, NY 11967, USA

	s
<b>Endotoxin</b>	<0.1 EU per 1 µg of the protein by the LAL method.
<b>Purity</b>	>98% as determined by SDS-PAGE. Ni-NTA chromatography
<b>Notes</b>	Please use within one month after protein reconstitution.
<b>Storage</b>	Lyophilized protein should be stored at -20°C. Upon reconstitution, protein aliquots should be stored at -20°C or -80°C.
<b>Storage Buffer</b>	The protein was lyophilized from a solution containing 1X PBS, containing 7 mM MgSO <sub>4</sub> , pH 7.2
<b>Reconstitution</b>	It is recommended to reconstitute the lyophilized protein in sterile H <sub>2</sub> O to a concentration not less than 100 µg/mL and incubate the stock solution for at least 20 min to ensure sufficient re-dissolved.

## GENE INFORMATION

<b>Gene Name</b>	<a href="#">Eno1 enolase 1, alpha non-neuron [ Mus musculus (house mouse) ]</a>
<b>Official Symbol</b>	<a href="#">Eno1</a>
<b>Synonyms</b>	NNE; Eno-1; MBP-1
<b>Gene ID</b>	<a href="#">13806</a>
<b>mRNA Refseq</b>	<a href="#">NM_001379127.1</a>
<b>Protein Refseq</b>	<a href="#">NP_001366056.1</a>

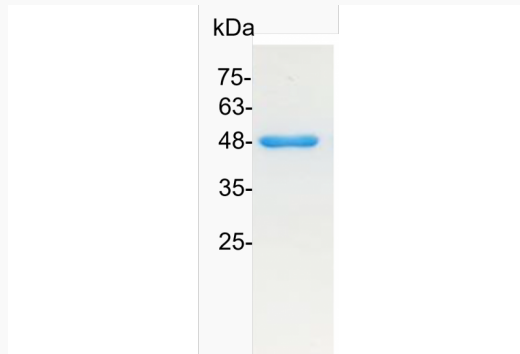
 Tel: 1-631-559-9269 1-516-512-3133

 Email: [info@creative-biomart.com](mailto:info@creative-biomart.com)  Fax: 1-631-938-8127

 45-1 Ramsey Road, Shirley, NY 11967, USA

UniProt ID

P17182



 Tel: 1-631-559-9269 1-516-512-3133

 Email: [info@creative-biomart.com](mailto:info@creative-biomart.com)  Fax: 1-631-938-8127

 45-1 Ramsey Road, Shirley, NY 11967, USA