

Active Recombinant Mouse Eno1 Protein, His-tagged, Bioactivity Validated

Cat. No. Eno1-244M **Lot. No.** (See product label)

SPECIFICATION

Product Overview	Recombinant Mouse Eno1(1-434aa) fused with His tag at N-terminal was expressed in E. coli. Bioactivity Validated.
Species	Mouse
Source	E.coli
ProteinLength	1-434aa
Description	Eno1 also known as Alpha-Enolase, is one of three enolase isoenzymes and a glycolytic enzyme expressed in most tissues. This protein plays a key role in anaerobic metabolism under hypoxic conditions and may act as a cell surface plasminogen receptor during tissue invasion. Abnormal expression of Eno1 is associated with tumor progression in some cases of breast and lung cancer. It also has been identified as an autoantigen associated with Hashimoto's encephalopathy and severe asthma.
Form	Liquid. In Phosphate Buffered Saline (pH 7.4) containing 10% glycerol.
Bio-activity	Specific activity is > 6,000 pmol/min/ug, and is defined as the amount of enzyme that convert 1.0 pmole of 2-phosphoglycerate to phosphoenolpyruvate per minute at pH 6.5 at 37C in a couple system with PK and LDH.
Molecular Mass	49.5 kDa (457aa) confirmed by MALDI-TOF

 Tel: 1-631-559-9269 1-516-512-3133

 Email: info@creative-biomart.com  Fax: 1-631-938-8127

 45-1 Ramsey Road, Shirley, NY 11967, USA



AA Sequence

MGSSHHHHHH SSGLVPRGSH MGSMILRIH AREIFDSRGN PTVEVDLYTA
 KGLFRAAVPS GASTGIYEAL ELRDNDKTRF MGKGVSQAVE
 HINKTIAPAL VSKKVNVEQ EKIDKLIEM DGTEKSKFG ANAILGVSLA
 VCKAGAVEKG VPLYRHIADL AGNPEVILPV PAFNVINGGS
 HAGNKLAMQE FMILPVGASS FREAMRIGAE VYHNLKNVIK EKYGKDATNV
 GDEGGFAPNI LENKEALELL KTAIAKAGYT DQVVIGMDVA
 ASEFYRSGKY DLDFKSPDDP SRYITPDQLA DLYKSFVQNY PVVSIEDPFD
 QDDWGAWQKF TASAGIQVVG DDLTVTNPKR IAKAASEKSC
 NCLLLKVNQI GSVTESLQAC KLAQSNWGV MVSHRSGETE DTFIADLVVG
 LCTGQIKTGA PCRSERLAKY NQILRIEEL GSKAKFAGRS
 FRNPLAK

Purity

> 90% by SDS - PAGE

Applications

SDS-PAGE

Storage

Can be stored at +4 centigrade short term (1-2 weeks). For long term storage, aliquot and store at -20 centigrade or -70 centigrade. Avoid repeated freezing and thawing cycles.

Concentration

1mg/ml (determined by Absorbance at 280nm)

GENE INFORMATION

Gene Name

[Eno1 enolase 1, alpha non-neuron \[Mus musculus \]](#)

Official Symbol

[Eno1](#)

Synonyms

ENO1; enolase 1, alpha non-neuron; alpha-enolase; NNE; non-neural enolase; c-Myc promoter binding protein; 2-phospho-D-glycerate hydrolase; 2-phospho-D-glycerate hydro-lyase; Eno-1; MBP-1; AL022784; 0610008115; MGC103111; MGC107267;

Tel: 1-631-559-9269 1-516-512-3133

Email: info@creative-biomart.com Fax: 1-631-938-8127

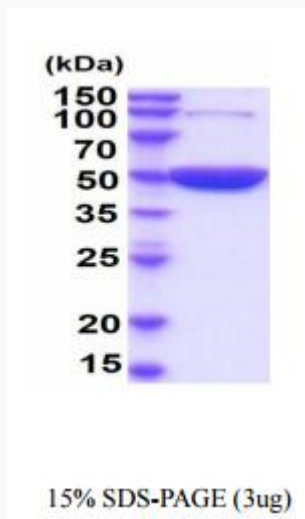
45-1 Ramsey Road, Shirley, NY 11967, USA

Gene ID 13806

mRNA Refseq NM_023119

Protein Refseq NP_075608

UniProt ID P17182



Tel: 1-631-559-9269 1-516-512-3133

Email: info@creative-biomart.com Fax: 1-631-938-8127

45-1 Ramsey Road, Shirley, NY 11967, USA