

Recombinant Mouse Eno1 protein, His-tagged

Cat. No. Eno1-2524M Lot. No. (See product label)

SPECIFICATION

Product Overview	Recombinant Mouse Eno1 protein(P17182)(2-433aa), fused with N-terminal His tag, was expressed in Yeast.
Species	Mouse
Source	Yeast
ProteinLength	2-433aa
Form	If the delivery form is liquid, the default storage buffer is Tris/PBS-based buffer, 5%-50% glycerol. If the delivery form is lyophilized powder, the buffer before lyophilization is Tris/PBS-based buffer, 6% Trehalose, pH 8.0.
Molecular Mass	48.0 kDa
Purity	Greater than 90% as determined by SDS-PAGE.
Storage	Store at -20°C/-80°C upon receipt, aliquoting is necessary for mutiple use. Avoid repeated freeze-thaw cycles.
Reconstitution	We recommend that this vial be briefly centrifuged prior to opening to bring the contents to the bottom. Please reconstitute protein in deionized sterile water to a concentration of 0.1-1.0 mg/mL. We recommend to add 5-50% of glycerol (final concentration) and aliquot for long-term storage at -20°C/-80°C.

 Tel: 1-631-559-9269 1-516-512-3133

 Email: info@creative-biomart.com  Fax: 1-631-938-8127

 45-1 Ramsey Road, Shirley, NY 11967, USA

AA Sequence

SILRIHAREIFDSRGNPTVEVDLYTAKGLFRAAVPSGASTGIYEALELRDNDKTRFMG
 KGVSQAVEHINKTIAPALVSKKVVVEQEKIDKLMIEDGTENKSKFGANAILGVSLA
 VCKAGAVEKGVPLYRHIADLAGNPEVILPVPAFNVINGGSHAGNKLAMQEFMILPVG
 ASSFREAMRIGAEVYHNLKNVIKEKYGKDATNVGDEGGFAPNILENKEALELLKTAIA
 KAGYTDQVVIGMDVAASEFYRSGKYDLDFKSPDDPSRYITPDQLADLYKSFVQNYP
 VVSIEDPFDQDDWGAWQKFTASAGIQVVGDDLTVTNPKRIAKAASEKSCNCLLLKVN
 QIGSVTESLQACKLAQSNGWGMVSHRSGETEDTFIADLVVGLCTGQIKTGAPCRS
 ERLAKYNQILRIEEELGSKAKFAGRSFRNPLA

GENE INFORMATION

Gene Name [Eno1 enolase 1, alpha non-neuron \[Mus musculus \]](#)

Official Symbol [Eno1](#)

Synonyms ENO1; enolase 1, alpha non-neuron; alpha-enolase; NNE; non-neural enolase; c-Myc promoter binding protein; 2-phospho-D-glycerate hydrolase; 2-phospho-D-glycerate hydro-lyase; Eno-1; MBP-1; AL022784; 0610008115; MGC103111; MGC107267;

Gene ID [13806](#)

mRNA Refseq [NM_023119](#)

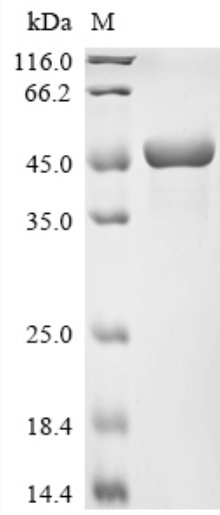
Protein Refseq [NP_075608](#)

 Tel: 1-631-559-9269 1-516-512-3133

 Email: info@creative-biomart.com  Fax: 1-631-938-8127

 45-1 Ramsey Road, Shirley, NY 11967, USA

SDS-PAGE



 Tel: 1-631-559-9269 1-516-512-3133

 Email: info@creative-biomart.com  Fax: 1-631-938-8127

 45-1 Ramsey Road, Shirley, NY 11967, USA