

Active Recombinant Mouse Eno2 protein, His-tagged

Cat. No. Eno2-125M **Lot. No.** (See product label)

SPECIFICATION

Product Overview	Recombinant Mouse Eno2(1-434aa) fused with His tag at N-terminal was expressed in E. coli.
Species	Mouse
Source	E.coli
ProteinLength	1-434 a.a.
Description	Eno2, also known as Gamma enolase isoform1, is a glycolytic isoenzyme which is located in central and peripheral neurons and neuroendocrine cells. This enzyme is released into the CSF when neural tissue is injured. Neoplasms derived from neural or neuroendocrine tissue may release Eno2 into the blood. Eno2 is a useful substance that has been detected in patients with certain tumors, namely: neuroblastoma, small cell lung cancer, medullary thyroid cancer, carcinoid tumors, pancreatic endocrine tumors, and melanoma.
Form	Liquid. In Phosphate Buffered Saline (pH7.4) containing 10% glycerol
Bio-activity	Specific activity is > 10,000 pmol/min/ug, and was obtained by measuring the decrease of NAD in absorbance at 340nm resulting from NADH at pH 6.5 at 37°C.
Molecular Mass	49.7kDa (457aa) confirmed by MALDI-TOF
AA Sequence	MGSSHHHHHH SSSLVPRGSH MGSMSEIKIW AREILDSRGN PTVEVDLYTA

 Tel: 1-631-559-9269 1-516-512-3133

 Email: info@creative-biomart.com  Fax: 1-631-938-8127

 45-1 Ramsey Road, Shirley, NY 11967, USA

KGLFRAAVPS GASTGIYEAL ELRDGDKQRY LGKGVKAVD HINSRIAPAL
 ISSGISVVEQ EKLDNLMLEL DGTENKSKFG ANAILGVSLA VCKAGAAERD
 LPLYRHIAQL AGNSDLILPV PAFNVINGGS HAGNKLAMQE FMILPVGAE
 FRDAMRLGAE VYHTLKGVIK DKYGKDATNV GDEGGFAPNI LENSEALELV
 KEAIDKAGYT EKMVIGMDVA ASEFYRDGKY DLDFKSPADP SRYITGDQLG
 ALYQDFVRNY PVVSIEDPFD QDDWAAWSKF TANVGIQIVG DDLTVTNPKR
 IERAVEEKAC NCLLLKVNQI GSVTEAIQAC KLAQENGWGV MVSHRSGETE
 DTFIADLVVG LCTGQIKTGA PCRSERLAKY NQLMRIEEL GDEARFAGHN
 FRNPSVL

Purity > 95% by SDS - PAGE

Storage Can be stored at +4 centigrade short term (1-2 weeks). For long term storage, aliquot and store at -20 centigrade or -70 centigrade. Avoid repeated freezing and thawing cycles.

Concentration 1mg/ml (determined by Absorbance at 280nm)

GENE INFORMATION

Gene Name [Eno2 enolase 2, gamma neuronal \[Mus musculus \]](#)

Official Symbol [Eno2](#)

Synonyms ENO2; enolase 2, gamma neuronal; gamma-enolase; neural enolase; neuron-specific enolase; 2-phospho-D-glycerate hydro-lyase; NSE; Eno-2; A1837106; D6Ertd375e;

Gene ID [13807](#)

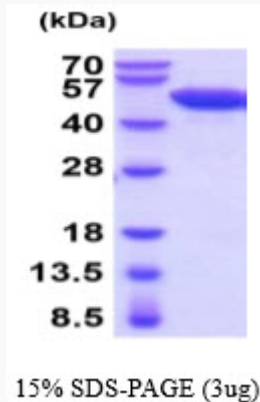
mRNA Refseq [NM_013509](#)

 Tel: 1-631-559-9269 1-516-512-3133

 Email: info@creative-biomart.com  Fax: 1-631-938-8127

 45-1 Ramsey Road, Shirley, NY 11967, USA

Protein Refseq	NP_038537
UniProt ID	P17183
Chromosome Location	6 F2; 6 59.17 cM
Pathway	Gluconeogenesis, organism-specific biosystem; Gluconeogenesis, oxaloacetate => fructose-6P, organism-specific biosystem; Gluconeogenesis, oxaloacetate => fructose-6P, conserved biosystem; Glucose metabolism, organism-specific biosystem; Glycolysis, organism-specific biosystem;
Function	lyase activity; magnesium ion binding; metal ion binding; phosphopyruvate hydratase activity; protein heterodimerization activity; protein homodimerization activity;



Tel: 1-631-559-9269 1-516-512-3133

Email: info@creative-biomart.com Fax: 1-631-938-8127

45-1 Ramsey Road, Shirley, NY 11967, USA