

Recombinant Mouse Eno3 protein, His&Myc-tagged

Cat. No. Eno3-454M Lot. No. (See product label)

SPECIFICATION

Product Overview	Recombinant Mouse Eno3 protein(P21550)(2-434aa), fused with N-terminal His tag and C-terminal Myc tag, was expressed in E.coli.
Species	Mouse
Source	E.coli
ProteinLength	2-434aa
Form	If the delivery form is liquid, the default storage buffer is Tris/PBS-based buffer, 5%-50% glycerol. If the delivery form is lyophilized powder, the buffer before lyophilization is Tris/PBS-based buffer, 6% Trehalose, pH 8.0.
Molecular Mass	54.3 kDa
Purity	Greater than 90% as determined by SDS-PAGE.
Storage	Store at -20°C/-80°C upon receipt, aliquoting is necessary for mutiple use. Avoid repeated freeze-thaw cycles.
Reconstitution	We recommend that this vial be briefly centrifuged prior to opening to bring the contents to the bottom. Please reconstitute protein in deionized sterile water to a concentration of 0.1-1.0 mg/mL. We recommend to add 5-50% of glycerol (final concentration) and aliquot for long-term storage at -20°C/-80°C.

 Tel: 1-631-559-9269 1-516-512-3133

 Email: info@creative-biomart.com  Fax: 1-631-938-8127

 45-1 Ramsey Road, Shirley, NY 11967, USA



AA Sequence

AMQKIFAREILDSRGNPTVEVDLHTAKGRFRAAVPSGASTGIYEALELRDGDKARYL
GKGVLKAVEHINKTLGPALLEKLSVVDQEKVDFMIELDG TENKSKFGANAILGVSL
AVCKAGAAEKG VPLYRHIADLAGNPDLVLPVPAFN VINGGSHAGNKLAMQEFMILPV
GASSFKEAMRIGAEVYHHLKGV KAKY GKDATNVGDEGGFAPNILENNEALELLKTAI
QAAGYPDKV VIGMDVAASEFYRNGKYDLDFKSPDDPARHISGEKLGELYKNFIQNYP
VVSIEDPFDQDDWATWTSF LSGVDIQIVGDDLTVTNP KRIAQAVEKKACNCLLLKVN
QIGSVTESIQACKLAQSN GWGVMVSHRSGETEDTFIADLVVGLCTGQIKTGAPCRSE
RLAKYNQLMRIEEALGDKAVFAGRKFRNPKAK

GENE INFORMATION

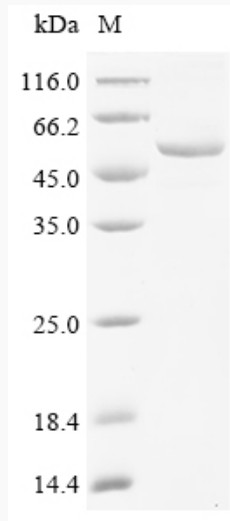
Gene Name	Eno3 enolase 3, beta muscle [Mus musculus]
Official Symbol	Eno3
Synonyms	ENO3; enolase 3, beta muscle; beta-enolase; MSE; muscle-specific enolase; skeletal muscle enolase; 2-phospho-D-glycerate hydro-lyase; Eno-3;
Gene ID	13808
mRNA Refseq	NM_001136062
Protein Refseq	NP_001129534

Tel: 1-631-559-9269 1-516-512-3133

Email: info@creative-biomart.com Fax: 1-631-938-8127

45-1 Ramsey Road, Shirley, NY 11967, USA

SDS-PAGE



 Tel: 1-631-559-9269 1-516-512-3133

 Email: info@creative-biomart.com  Fax: 1-631-938-8127

 45-1 Ramsey Road, Shirley, NY 11967, USA