

Recombinant Mouse Eno3 protein, 6xHis-tagged

Cat. No. Eno3-5775M Lot. No. (See product label)

SPECIFICATION

Product Overview	Recombinant Mouse Eno3 protein(P21550)(2-434aa), fused with N-terminal 6xHis tag, was expressed in Yeast.
Species	Mouse
Source	Yeast
ProteinLength	2-434aa
Tag	N-6xHis
Form	If the delivery form is liquid, the default storage buffer is Tris/PBS-based buffer, 5%-50% glycerol. If the delivery form is lyophilized powder, the buffer before lyophilization is Tris/PBS-based buffer, 6% Trehalose, pH 8.0.
Molecular Mass	48.9 kDa
Purity	Greater than 90% as determined by SDS-PAGE.
Storage	Store at -20°C/-80°C upon receipt, aliquoting is necessary for mutiple use. Avoid repeated freeze-thaw cycles.
Reconstitution	We recommend that this vial be briefly centrifuged prior to opening to bring the contents to the bottom. Please reconstitute protein in deionized sterile water to a concentration of 0.1-1.0 mg/mL. We recommend to add 5-50% of glycerol (final

 Tel: 1-631-559-9269 1-516-512-3133

 Email: info@creative-biomart.com  Fax: 1-631-938-8127

 45-1 Ramsey Road, Shirley, NY 11967, USA

concentration) and aliquot for long-term storage at -20°C/-80°C.

AA Sequence

```
AMQKIFAREILDSRGNPTVEVDLHTAKGRFRAAVPSGASTGIYEALELRDGDKARYL
GKGVLKAVEHINKTLGPALLEKKLSVVDQEKVDFMIELDG TENKSKFGANAILGVSL
AVCKAGAAEKGVP LYRHIADLAGNPDLVLPVPAFNVINGGSHAGNKLAMQEFMILPV
GASSFKEAMRIGAEVYHHLKGV KVIKAKY GKDATNVGDEGGFAPNILENNEALELLKTAI
QAAGYPDKVVIGMDVAASEFYRNGKYDLDFKSPDDPARHISGEKLGELYKNFIQNYP
VVSIEDPFDQDDWATWTSF LSGVDIQIVGDDLTVTNPKRIAQAVEKKACNCLLLKVN
QIGSVTESIQACKLAQSNGWGMVSHRSGETEDTFIADLVVGLCTGQIKTGAPCRSE
RLAKYNQLMRIEEALGDKAVFAGRKFRNPKAK
```

GENE INFORMATION

Gene Name [Eno3 enolase 3, beta muscle \[Mus musculus \]](#)

Official Symbol [Eno3](#)

Synonyms ENO3; enolase 3, beta muscle; beta-enolase; MSE; muscle-specific enolase; skeletal muscle enolase; 2-phospho-D-glycerate hydro-lyase; Eno-3;

Gene ID [13808](#)

mRNA Refseq [NM_001136062](#)

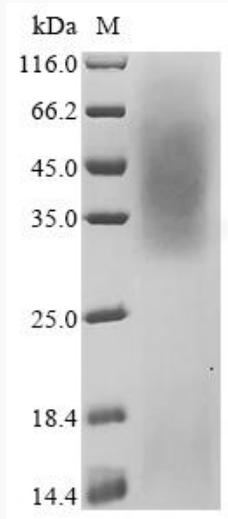
Protein Refseq [NP_001129534](#)

 Tel: 1-631-559-9269 1-516-512-3133

 Email: info@creative-biomart.com  Fax: 1-631-938-8127

 45-1 Ramsey Road, Shirley, NY 11967, USA

SDS-PAGE



 Tel: 1-631-559-9269 1-516-512-3133

 Email: info@creative-biomart.com  Fax: 1-631-938-8127

 45-1 Ramsey Road, Shirley, NY 11967, USA