

## Recombinant Mouse Eno3 protein, 10xHis-tagged

Cat. No. Eno3-5776M Lot. No. (See product label)

### SPECIFICATION

<b>Product Overview</b>	Recombinant Mouse Eno3 protein(P21550)(2-434aa), fused with N-terminal 10xHis tag, was expressed in Yeast.
<b>Species</b>	Mouse
<b>Source</b>	Yeast
<b>ProteinLength</b>	2-434aa
<b>Tag</b>	N-10xHis
<b>Form</b>	If the delivery form is liquid, the default storage buffer is Tris/PBS-based buffer, 5%-50% glycerol. If the delivery form is lyophilized powder, the buffer before lyophilization is Tris/PBS-based buffer, 6% Trehalose, pH 8.0.
<b>Molecular Mass</b>	49.4 kDa
<b>Purity</b>	Greater than 90% as determined by SDS-PAGE.
<b>Storage</b>	Store at -20°C/-80°C upon receipt, aliquoting is necessary for mutiple use. Avoid repeated freeze-thaw cycles.
<b>Reconstitution</b>	We recommend that this vial be briefly centrifuged prior to opening to bring the contents to the bottom. Please reconstitute protein in deionized sterile water to a concentration of 0.1-1.0 mg/mL. We recommend to add 5-50% of glycerol (final

 Tel: 1-631-559-9269 1-516-512-3133

 Email: [info@creative-biomart.com](mailto:info@creative-biomart.com)  Fax: 1-631-938-8127

 45-1 Ramsey Road, Shirley, NY 11967, USA

concentration) and aliquot for long-term storage at -20°C/-80°C.

**AA Sequence**

```
AMQKIFAREILDSRGNPTVEVDLHTAKGRFRAAVPSGASTGIYEALELRDGDKARYL
GKGVLKAVEHINKTLGPALLEKKLSVVDQEKVDKFMIELDGTENKSKFGANAILGVSL
AVCKAGAAEKGVPLYRHIADLAGNPDLVLPVPAFNVINGGSHAGNKLAMQEFMILPV
GASSFKEAMRIGAEVYHHLKGVKAKYGKDATNVGDEGGFAPNILENNEALELLKTAI
QAAGYPDKVVIGMDVAASEFYRNGKYDLDFKSPDDPARHISGEKLGELYKNFIQNYP
VVSIEDPFDQDDWATWTSFSLSGVDIQIVGDDLTVTNPKRIAQAVEKKACNCLLLKVN
QIGSVTESIQACKLAQSNWGWVMVSHRSGETEDTFIADLVVGLCTGQIKTGAPCRSE
RLAKYNQLMRIEEALGDKAVFAGRKFRNPKAK
```

## GENE INFORMATION

**Gene Name** [Eno3 enolase 3, beta muscle \[ Mus musculus \]](#)

**Official Symbol** [Eno3](#)

**Synonyms** ENO3; enolase 3, beta muscle; beta-enolase; MSE; muscle-specific enolase; skeletal muscle enolase; 2-phospho-D-glycerate hydro-lyase; Eno-3;

**Gene ID** [13808](#)

**mRNA Refseq** [NM\\_001136062](#)

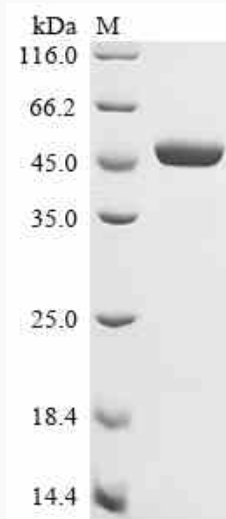
**Protein Refseq** [NP\\_001129534](#)

 Tel: 1-631-559-9269 1-516-512-3133

 Email: [info@creative-biomart.com](mailto:info@creative-biomart.com)  Fax: 1-631-938-8127

 45-1 Ramsey Road, Shirley, NY 11967, USA

**SDS-PAGE**



 Tel: 1-631-559-9269 1-516-512-3133

 Email: [info@creative-biomart.com](mailto:info@creative-biomart.com)  Fax: 1-631-938-8127

 45-1 Ramsey Road, Shirley, NY 11967, USA