

## Recombinant Mouse Enpp1 protein, His & GST-tagged

Cat. No. Enpp1-1415M Lot. No. (See product label)

### SPECIFICATION

<b>Product Overview</b>	Recombinant Mouse Enpp1 aa. (Gly568~Asp789 fused with N-terminal His & GST tag was produced in E. coli cells.
<b>Species</b>	Mouse
<b>Source</b>	E.coli
<b>ProteinLength</b>	Gly568~Asp789
<b>Description</b>	This gene encodes a member of the nucleoside pyrophosphatase/phosphodiesterase family of enzymes that catalyzes the hydrolysis of pyrophosphate and phosphodiester bonds in nucleotide triphosphates and oligonucleotides, respectively, to generate nucleoside 5'-monophosphates. The encoded protein is a type II transmembrane glycoprotein that negatively regulates bone mineralization. Mice harboring a nonsense mutation in this gene, termed tiptoe walking (ttw), exhibit ectopic ossification of the spinal ligaments. The encoded protein binds to the insulin receptor, inhibits downstream signaling events and induces insulin resistance and glucose tolerance. This gene is located adjacent to a paralog on chromosome 10. Alternative splicing results in multiple transcript variants encoding different isoforms.
<b>Form</b>	Freeze-dried powder
<b>Molecular Mass</b>	56kDa as determined by SDS-PAGE reducing conditions.
<b>Endotoxin</b>	<1.0EU per 1g (determined by the LAL method)

 Tel: 1-631-559-9269 1-516-512-3133

 Email: [info@creative-biomart.com](mailto:info@creative-biomart.com)  Fax: 1-631-938-8127

 45-1 Ramsey Road, Shirley, NY 11967, USA

<b>Purity</b>	>95%
<b>Characteristic</b>	The isoelectric point is 6.3.
<b>Applications</b>	Positive Control; Immunogen; SDS-PAGE; WB.
<b>Stability</b>	The thermal stability is described by the loss rate. The loss rate was determined by accelerated thermal degradation test, that is, incubate the protein at 37°C for 48h, and no obvious degradation and precipitation were observed. The loss rate is less than 5% within the expiration date under appropriate storage condition.
<b>Storage</b>	Avoid repeated freeze/thaw cycles. Store at 2-8°C for one month. Aliquot and store at -80°C for 12 months.
<b>Concentration</b>	200µg/mL
<b>Storage buffer</b>	20mM Tris, 150mM NaCl, pH8.0, containing 1mM EDTA, 1mM DTT, 0.01% sarcosyl, 5% Trehalose and Proclin300.
<b>Reconstitution</b>	Reconstitute in 20mM Tris, 150mM NaCl (pH8.0) to a concentration of 0.1-1.0mg/mL. Do not vortex.

## GENE INFORMATION

<b>Gene Name</b>	<a href="#">Enpp1 ectonucleotide pyrophosphatase/phosphodiesterase 1 [ Mus musculus (house mouse) ]</a>
<b>Official Symbol</b>	<a href="#">Enpp1</a>
<b>Synonyms</b>	Enpp1; ectonucleotide pyrophosphatase/phosphodiesterase 1; Pca; ttw; twy; M6S1; NPP1; Npps; PC-1; Ly-41; Pca-1; PdnP1; C76301; CD203c; E-NPP1; E-NPP 1;

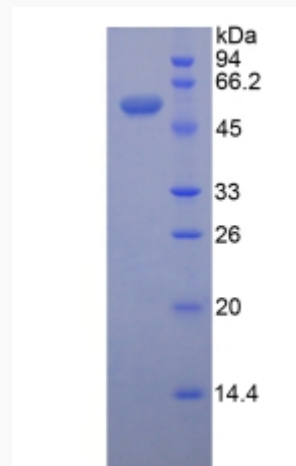
 Tel: 1-631-559-9269 1-516-512-3133

 Email: [info@creative-biomart.com](mailto:info@creative-biomart.com)  Fax: 1-631-938-8127

 45-1 Ramsey Road, Shirley, NY 11967, USA

AI428932; 4833416E15Rik; ectonucleotide pyrophosphatase/phosphodiesterase family member 1; lymphocyte antigen 41; phosphodiesterase I/nucleotide pyrophosphatase 1; plasma-cell membrane glycoprotein PC-1; tiptoe walking

Gene ID	18605
mRNA Refseq	NM_001308327.1
Protein Refseq	NP_001295256.1
UniProt ID	P06802

**SDS-PAGE**

Tel: 1-631-559-9269 1-516-512-3133

Email: [info@creative-biomart.com](mailto:info@creative-biomart.com) Fax: 1-631-938-8127

45-1 Ramsey Road, Shirley, NY 11967, USA