

Recombinant Mouse Enpp1 protein, His-tagged

Cat. No. Enpp1-2434M Lot. No. (See product label)

SPECIFICATION

Product Overview	Recombinant Mouse Enpp1 protein(P06802)(635-906aa), fused with C-terminal His tag, was expressed in Yeast.
Species	Mouse
Source	Yeast
ProteinLength	635-906aa
Tag	C-His
Form	If the delivery form is liquid, the default storage buffer is Tris/PBS-based buffer, 5%-50% glycerol. If the delivery form is lyophilized powder, the buffer before lyophilization is Tris/PBS-based buffer, 6% Trehalose, pH 8.0.
Molecular Mass	32.9 kDa
Purity	Greater than 90% as determined by SDS-PAGE.
Storage	Store at -20°C/-80°C upon receipt, aliquoting is necessary for mutiple use. Avoid repeated freeze-thaw cycles.
Reconstitution	We recommend that this vial be briefly centrifuged prior to opening to bring the contents to the bottom. Please reconstitute protein in deionized sterile water to a concentration of 0.1-1.0 mg/mL. We recommend to add 5-50% of glycerol (final

 Tel: 1-631-559-9269 1-516-512-3133

 Email: info@creative-biomart.com  Fax: 1-631-938-8127

 45-1 Ramsey Road, Shirley, NY 11967, USA

concentration) and aliquot for long-term storage at -20°C/-80°C.

AA Sequence

HMTVPYGRPRILLKQHHVCLLQQQQFLTGYSLDLLMPLWASYTFLRNDQFSRDDFS
 NCLYQDLRIPLSPVHKCSYYKSNSKLSYGFLTTPRLNRVSNHIYSEALLTSNIVPMYQ
 SFQVIWHYLHDTLLQRYAHERNGINVVSGPVDFDYDGRYDSLEILKQNSRVIRSQEI
 LIPTHFFIVLTSCKQLSETPLECSALESSAYILPHRPDNIESCTHGKRESSWVEELLTL
 HRARVTDVELITGLSFYQDRQESVSELLRLKTHLPIFSQED

GENE INFORMATION

Gene Name [Enpp1 ectonucleotide pyrophosphatase/phosphodiesterase 1 \[Mus musculus \]](#)

Official Symbol [Enpp1](#)

Synonyms

ENPP1; ectonucleotide pyrophosphatase/phosphodiesterase 1; ectonucleotide pyrophosphatase/phosphodiesterase family member 1; E-NPP 1; tiptoe walking; lymphocyte antigen 41; plasma-cell membrane glycoprotein PC-1; phosphodiesterase I/nucleotide pyrophosphatase 1; 1 ectonucleotide pyrophosphatase/phosphodiesterase 1; Pca; ttw; twy; M6S1; NPP1; Npps; PC-1; Ly-41; Pca-1; Pdnp1; C76301; CD203c; E-NPP1; AI428932; 4833416E15Rik;

Gene ID [18605](#)

mRNA Refseq [NM_008813](#)

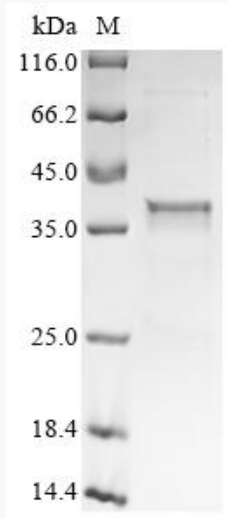
Protein Refseq [NP_032839](#)

 Tel: 1-631-559-9269 1-516-512-3133

 Email: info@creative-biomart.com  Fax: 1-631-938-8127

 45-1 Ramsey Road, Shirley, NY 11967, USA

SDS-PAGE



 Tel: 1-631-559-9269 1-516-512-3133

 Email: info@creative-biomart.com  Fax: 1-631-938-8127

 45-1 Ramsey Road, Shirley, NY 11967, USA