

## Recombinant Mouse Enpp1 protein, His-tagged

Cat. No. Enpp1-4533M Lot. No. (See product label)

### SPECIFICATION

<b>Product Overview</b>	Recombinant Mouse Enpp1 protein(P06802)(635-906aa), fused with N-terminal His tag, was expressed in E.coli.
<b>Species</b>	Mouse
<b>Source</b>	E.coli
<b>ProteinLength</b>	635-906aa
<b>Form</b>	If the delivery form is liquid, the default storage buffer is Tris/PBS-based buffer, 5%-50% glycerol. If the delivery form is lyophilized powder, the buffer before lyophilization is Tris/PBS-based buffer, 6% Trehalose, pH 8.0.
<b>Molecular Mass</b>	37.8 kDa
<b>Purity</b>	Greater than 90% as determined by SDS-PAGE.
<b>Storage</b>	Store at -20°C/-80°C upon receipt, aliquoting is necessary for mutiple use. Avoid repeated freeze-thaw cycles.
<b>Reconstitution</b>	We recommend that this vial be briefly centrifuged prior to opening to bring the contents to the bottom. Please reconstitute protein in deionized sterile water to a concentration of 0.1-1.0 mg/mL. We recommend to add 5-50% of glycerol (final concentration) and aliquot for long-term storage at -20°C/-80°C.

 Tel: 1-631-559-9269 1-516-512-3133

 Email: [info@creative-biomart.com](mailto:info@creative-biomart.com)  Fax: 1-631-938-8127

 45-1 Ramsey Road, Shirley, NY 11967, USA

**AA Sequence**

HMTVPYGRPRILLKQHHVCLLQQQQFLTGYSLDLLMPLWASYTFLRNDQFSRDDFS  
 NCLYQDLRIPLSPVHKCSYYKSNSKLSYGFLTTPRLNLRVSNHIYSEALLTSNIVPMYQ  
 SFQVIWHYLHDTLLQRYAHERNGINVVSGPVDFDYDGRYDSLEILKQNSRVIRSQEI  
 LIPTHFFIVLTSCKQLSETPLECSALESSAYILPHRPDNIESCTHGKRESSWVEELLTL  
 HRARVTDVELITGLSFYQDRQESVSELLRLKTHLPIFSQED

**GENE INFORMATION**

**Gene Name** [Enpp1 ectonucleotide pyrophosphatase/phosphodiesterase 1 \[ Mus musculus \]](#)

**Official Symbol** [Enpp1](#)

**Synonyms**

ENPP1; ectonucleotide pyrophosphatase/phosphodiesterase 1; ectonucleotide pyrophosphatase/phosphodiesterase family member 1; E-NPP 1; tiptoe walking; lymphocyte antigen 41; plasma-cell membrane glycoprotein PC-1; phosphodiesterase I/nucleotide pyrophosphatase 1; 1 ectonucleotide pyrophosphatase/phosphodiesterase 1; Pca; ttw; twy; M6S1; NPP1; Npps; PC-1; Ly-41; Pca-1; Pdnp1; C76301; CD203c; E-NPP1; AI428932; 4833416E15Rik;

**Gene ID** [18605](#)

**mRNA Refseq** [NM\\_008813](#)

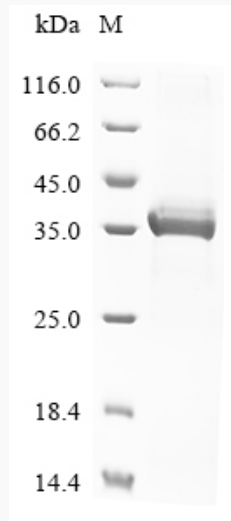
**Protein Refseq** [NP\\_032839](#)

 Tel: 1-631-559-9269 1-516-512-3133

 Email: [info@creative-biomart.com](mailto:info@creative-biomart.com)  Fax: 1-631-938-8127

 45-1 Ramsey Road, Shirley, NY 11967, USA

**SDS-PAGE**



 Tel: 1-631-559-9269 1-516-512-3133

 Email: [info@creative-biomart.com](mailto:info@creative-biomart.com)  Fax: 1-631-938-8127

 45-1 Ramsey Road, Shirley, NY 11967, USA