

## Recombinant Rat Enpp7 protein, His-tagged

**Cat. No.** Enpp7-7724R    **Lot. No.** (See product label)

### SPECIFICATION

<b>Product Overview</b>	Recombinant Rat Enpp7 aa. (Gly22~Val439) fused with N-terminal His tag was produced in E. coli cells.
<b>Species</b>	Rat
<b>Source</b>	E.coli
<b>ProteinLength</b>	Gly22~Val439
<b>Form</b>	Freeze-dried powder
<b>Molecular Mass</b>	51kDa as determined by SDS-PAGE reducing conditions.
<b>Endotoxin</b>	<1.0EU per 1g (determined by the LAL method)
<b>Purity</b>	>95%
<b>Characteristic</b>	The isoelectric point is 6.6.
<b>Applications</b>	SDS-PAGE; WB; ELISA; IP; CoIP; Reporter Assays; Purification; Amine Reactive Labeling.
<b>Stability</b>	The thermal stability is described by the loss rate. The loss rate was determined by accelerated thermal degradation test, that is, incubate the protein at 37°C for 48h, and no obvious degradation and precipitation were observed. The loss rate is less

 Tel: 1-631-559-9269    1-516-512-3133

 Email: [info@creative-biomart.com](mailto:info@creative-biomart.com)     Fax: 1-631-938-8127

 45-1 Ramsey Road, Shirley, NY 11967, USA



than 5% within the expiration date under appropriate storage condition.

**Storage**

Avoid repeated freeze/thaw cycles. Store at 2-8°C for one month. Aliquot and store at -80°C for 12 months.

**Concentration**

200µg/mL

**Storage buffer**

20mM Tris, 150mM NaCl, pH8.0, containing 1mM EDTA, 1mM DTT, 0.01% sarcosyl, 5%Trehalose and Proclin300.

**Reconstitution**

Reconstitute in 20mM Tris, 150mM NaCl (pH8.0) to a concentration of 0.1-1.0 mg/mL. Do not vortex.

## GENE INFORMATION

**Gene Name**

[Enpp7 ectonucleotide pyrophosphatase/phosphodiesterase 7 \[ Rattus norvegicus \(Norway rat\) \]](#)

**Official Symbol**

[Enpp7](#)

**Synonyms**

E-NPP 7; E-NPP7; NPP-7; alk-SMase; alkaline sphingomyelin phosphodiesterase; intestinal alkaline sphingomyelinase; sphingomyelinase, intestinal alkaline; ectonucleotide pyrophosphatase/phosphodiesterase family member 7

**Gene ID**

[303729](#)

**mRNA Refseq**

[NM\\_001012466.1](#)

**Protein Refseq**

[NP\\_001012484.1](#)

**UniProt ID**

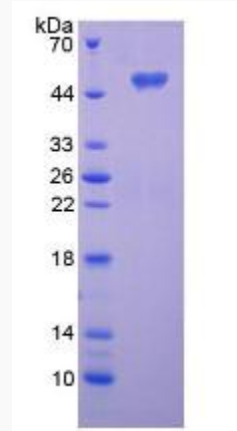
[Q5EZ72](#)

Tel: 1-631-559-9269 1-516-512-3133

Email: [info@creative-biomart.com](mailto:info@creative-biomart.com) Fax: 1-631-938-8127

45-1 Ramsey Road, Shirley, NY 11967, USA

**SDS-PAGE**



 Tel: 1-631-559-9269 1-516-512-3133

 Email: [info@creative-biomart.com](mailto:info@creative-biomart.com)  Fax: 1-631-938-8127

 45-1 Ramsey Road, Shirley, NY 11967, USA