

Recombinant Mouse Entpd1 protein, His & T7-tagged

Cat. No. Entpd1-1518M Lot. No. (See product label)

SPECIFICATION

Product Overview	Recombinant Mouse Entpd1 aa. (Thr98~Leu352 (Accession # P55772)) fused with N-terminal His & T7 tag was produced in E. coli cells.
Species	Mouse
Source	E.coli
ProteinLength	Thr98~Leu352
Form	Freeze-dried powder
Molecular Mass	Predicted Molecular Mass: 32.3kDa.
Endotoxin	<1.0EU per 1g (determined by the LAL method).
Purity	>95%
Characteristic	The isoelectric point is 5.5.
Applications	SDS-PAGE; WB; ELISA; IP.
Stability	The thermal stability is described by the loss rate. The loss rate was determined by accelerated thermal degradation test, that is, incubate the protein at 37°C for 48h, and no obvious degradation and precipitation were observed. The loss rate is less than 5% within the expiration date under appropriate storage condition.

 Tel: 1-631-559-9269 1-516-512-3133

 Email: info@creative-biomart.com  Fax: 1-631-938-8127

 45-1 Ramsey Road, Shirley, NY 11967, USA

Storage	Avoid repeated freeze/thaw cycles. Store at 2-8°C for one month. Aliquot and store at -80°C for 12 months.
Storage buffer	Supplied as lyophilized form in PBS, pH7.4, containing 5% sucrose, 0.01% sarcosyl.
Reconstitution	Reconstitute in sterile PBS, pH7.2-pH7.4.

GENE INFORMATION

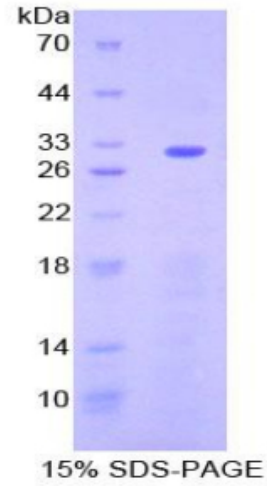
Gene Name	Entpd1 ectonucleoside triphosphate diphosphohydrolase 1 [Mus musculus (house mouse)]
Official Symbol	Entpd1
Synonyms	Cd39; AA408691; NTPDase-1; 2610206B08Rik; CD39 antigen; NTPDase 1; ecto-ATP diphosphohydrolase 1; ecto-ATPDase 1; ecto-ATPase 1; ectoapyrase; lymphoid cell activation antigen; ectonucleoside triphosphate diphosphohydrolase 1
Gene ID	12495
mRNA Refseq	NM_001304721.1
Protein Refseq	NP_001291650.1
UniProt ID	P55772

 Tel: 1-631-559-9269 1-516-512-3133

 Email: info@creative-biomart.com  Fax: 1-631-938-8127

 45-1 Ramsey Road, Shirley, NY 11967, USA

SDS-PAGE



 Tel: 1-631-559-9269 1-516-512-3133

 Email: info@creative-biomart.com  Fax: 1-631-938-8127

 45-1 Ramsey Road, Shirley, NY 11967, USA