

Recombinant Mouse Ep300 Protein, His-tagged

Cat. No. Ep300-415M Lot. No. (See product label)

SPECIFICATION

Product Overview	Recombinant Mouse Ep300(Gly2124~Ser2397) fused with His tag at N-terminal was expressed in E. coli.
Species	Mouse
Source	E.coli
ProteinLength	Gly2124~Ser2397
Form	PBS, pH7.4, containing 0.01% SKL, 1mM DTT, 5% Trehalose and Proclin300.
Molecular Mass	33.2kDa
Endotoxin	<1.0EU per 1ug (determined by the LAL method)
Purity	> 95%
Applications	Positive Control; Immunogen; SDS-PAGE; WB. If bio-activity of the protein is needed, please check active protein
Stability	The thermal stability is described by the loss rate. The loss rate was determined by accelerated thermal degradation test, that is, incubate the protein at 37 centigrade for 48h, and no obvious degradation and precipitation were observed. The loss rate is less than 5% within the expiration date under appropriate storage condition.

 Tel: 1-631-559-9269 1-516-512-3133

 Email: info@creative-biomart.com  Fax: 1-631-938-8127

 45-1 Ramsey Road, Shirley, NY 11967, USA

Storage Avoid repeated freeze/thaw cycles. Store at 2-8 centigrade for one month. Aliquot and store at -80 centigrade for 12 months.

Reconstitution Reconstitute in PBS or others

GENE INFORMATION

Gene Name Ep300 E1A binding protein p300 [Mus musculus]

Official Symbol Ep300

Synonyms EP300; E1A binding protein p300; histone acetyltransferase p300; E1A-associated protein p300; p300; KAT3B; p300 HAT; A430090G16; A730011L11;

Gene ID 328572

mRNA Refseq NM_177821

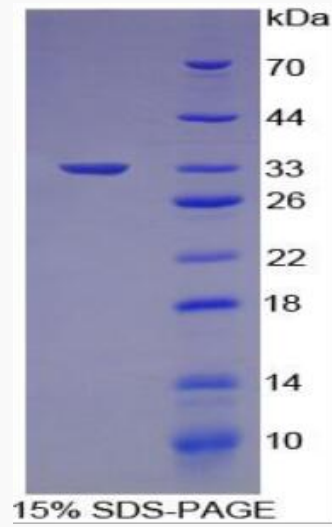
Protein Refseq NP_808489

UniProt ID B2RWS6

 Tel: 1-631-559-9269 1-516-512-3133

 Email: info@creative-biomart.com  Fax: 1-631-938-8127

 45-1 Ramsey Road, Shirley, NY 11967, USA



 Tel: 1-631-559-9269 1-516-512-3133

 Email: info@creative-biomart.com  Fax: 1-631-938-8127

 45-1 Ramsey Road, Shirley, NY 11967, USA