

Recombinant Rat Ep300 protein, His-GST-tagged

Cat. No. Ep300-416R Lot. No. (See product label)

SPECIFICATION

Product Overview	Recombinant Rat Ep300 protein(Met1~Pro158), fused with N-terminal His and GST Tag, was expressed in E. coli.
Species	Rat
Source	E.coli
ProteinLength	Met1~Pro158
Form	20mM Tris, 150mM NaCl, pH8.0, containing 1mM EDTA, 1mM DTT, 0.01% SKL, 5% Trehalose and Proclin300.
Molecular Mass	46kDa
Endotoxin	<1.0EU per 1g (determined by the LAL method)
Purity	> 80%
Storage	Avoid repeated freeze/thaw cycles. Store at 2-8°C for one month. Aliquot and store at -80°C for 12 months.
Reconstitution	Reconstitute in 20mM Tris, 150mM NaCl (pH8.0) to a concentration of 0.1-1.0 mg/mL. Do not vortex.

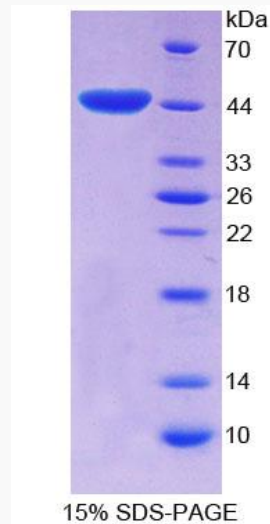
GENE INFORMATION

 Tel: 1-631-559-9269 1-516-512-3133

 Email: info@creative-biomart.com  Fax: 1-631-938-8127

 45-1 Ramsey Road, Shirley, NY 11967, USA

Gene Name	Ep300 E1A binding protein p300 [Rattus norvegicus]
Official Symbol	Ep300
Synonyms	EP300; E1A binding protein p300; histone acetyltransferase p300
Gene ID	170915
mRNA Refseq	NM_133403

SDS-PAGE

Tel: 1-631-559-9269 1-516-512-3133

Email: info@creative-biomart.com Fax: 1-631-938-8127

45-1 Ramsey Road, Shirley, NY 11967, USA