

Recombinant Mouse Ep300 protein, His-tagged

Cat. No. Ep300-4322M Lot. No. (See product label)

SPECIFICATION

Product Overview	Recombinant Mouse Ep300 protein(B2RWS6)(1286-1662aa), fused with C-terminal His tag, was expressed in E.coli.
Species	Mouse
Source	E.coli
ProteinLength	1286-1662a.a.
Tag	His
Form	If the delivery form is liquid, the default storage buffer is Tris/PBS-based buffer, 5%-50% glycerol. If the delivery form is lyophilized powder, the buffer before lyophilization is Tris/PBS-based buffer, 6% Trehalose, pH 8.0.
Molecular Mass	50.4 kDa
Purity	Greater than 90% as determined by SDS-PAGE.
Storage	Store at -20°C/-80°C upon receipt, aliquoting is necessary for mutiple use. Avoid repeated freeze-thaw cycles.
Reconstitution	We recommend that this vial be briefly centrifuged prior to opening to bring the contents to the bottom. Please reconstitute protein in deionized sterile water to a concentration of 0.1-1.0 mg/mL.We recommend to add 5-50% of glycerol (final

 Tel: 1-631-559-9269 1-516-512-3133

 Email: info@creative-biomart.com  Fax: 1-631-938-8127

 45-1 Ramsey Road, Shirley, NY 11967, USA

concentration) and aliquot for long-term storage at -20°C/-80°C.

AA Sequence

KLSAKRLPSTR LGTFLENRVNDFLRRQNHPESGEVTVRVVHASDKTVEVKPGMKAR
 FVDSGEMAESFPYRTKALFAFEEIDGVDLCCFFGMHVQEYGSDCPPPNQRRVYISYL
 DSVHFFRPKCLRTAVYHEILIGYLEYVKKLGYTTGHIWACPPSEGDDYIFHCHPPDQK
 IPKPKRLQEYWKMLDKAVSERIVHDYKDILKQATEDRLTSAKELPYFEGDFWPNVL
 EESIKELEQEEEEERKREENTSNESTDVTKGDSKNAKKKNNKKT SKNKSSLSRGNKK
 KPGMPNVSNDLSQKLYATMEKHKEVFFVIRLIACPAPNSLPPIVDPDPLIPCDLMDGR
 DAFLT LARDKHLEFSSLRRAQWSTMCMMLVELHTQSQ

GENE INFORMATION

Gene Name [Ep300 E1A binding protein p300 \[Mus musculus \]](#)

Official Symbol [Ep300](#)

Synonyms EP300; E1A binding protein p300; histone acetyltransferase p300; E1A-associated protein p300; p300; KAT3B; p300 HAT; A430090G16; A730011L11;

Gene ID [328572](#)

mRNA Refseq [NM_177821](#)

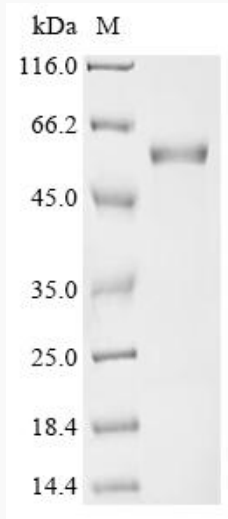
Protein Refseq [NP_808489](#)

 Tel: 1-631-559-9269 1-516-512-3133

 Email: info@creative-biomart.com  Fax: 1-631-938-8127

 45-1 Ramsey Road, Shirley, NY 11967, USA

SDS-PAGE



 Tel: 1-631-559-9269 1-516-512-3133

 Email: info@creative-biomart.com  Fax: 1-631-938-8127

 45-1 Ramsey Road, Shirley, NY 11967, USA