

Recombinant Mouse Ephx2 Protein, His-tagged

Cat. No. Ephx2-36M Lot. No. (See product label)

SPECIFICATION

Product Overview	Recombinant mouse Ephx2 protein with a N-terminal His-tag was expressed in Sf21 cells.
Species	Mouse
Source	Insect Cells
Description	Mammalian soluble epoxide hydrolase (sEH) is a member of the α/β -hydrolase fold family of enzymes that catalyzes the hydrolysis of exogenous and endogenous epoxides to vicinal diols. sEH is a homodimer consisting of two domains. The C-terminal domain is responsible for the epoxide hydrolase activity while the N-terminal domain has a catalytic center with phosphatase activity. Endogenous substrates for sEH include epoxyeicosatrienoic acids (EETs) which are known for their vasodilatory effects as well as for their anti-inflammatory actions. Inhibition of sEH in animal models was shown to reduce hypertension and vascular inflammation, as well as related syndromes, validating sEH as a highly promising target for drug discovery.
Molecular Mass	64 kDa
Purity	≥95% estimated by SDS-PAGE
Unit Definition	One unit is defined as the amount of enzyme required to produce 1 nmole of 6-methoxy-2-naphthaldehyde per minute at 37 centigrade in 25 mM bis-Tris, pH 7.0, containing 1 μ M PHOME.

 Tel: 1-631-559-9269 1-516-512-3133

 Email: info@creative-biomart.com  Fax: 1-631-938-8127

 45-1 Ramsey Road, Shirley, NY 11967, USA

Stability	≥ 6 months
Storage	Store it at -80 centigrade
Storage Buffer	TBS buffer at pH 7.4 with 20% glycerol

GENE INFORMATION

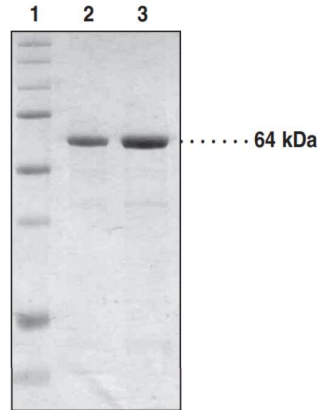
Gene Name	Ephx2 epoxide hydrolase 2, cytoplasmic [<i>Mus musculus</i> (house mouse)]
Official Symbol	Ephx2
Synonyms	Ephx2; epoxide hydrolase 2, cytoplasmic; CEH; SEH; sEP; Eph2; bifunctional epoxide hydrolase 2; cytosolic epoxide hydrolase; epoxide hydratase; epoxide hydrolase 2C; soluble epoxide hydrolase
Gene ID	13850
mRNA Refseq	NM_001271403
Protein Refseq	NP_001258332
UniProt ID	P34914

 Tel: 1-631-559-9269 1-516-512-3133

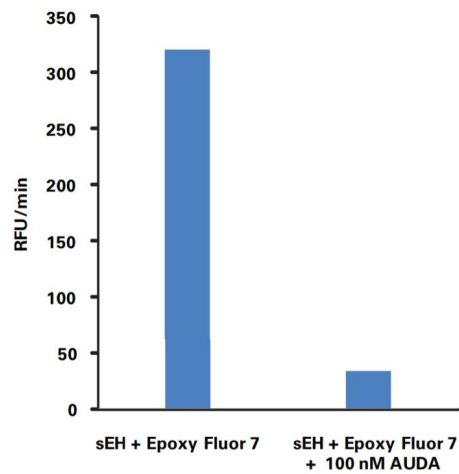
 Email: info@creative-biomart.com  Fax: 1-631-938-8127

 45-1 Ramsey Road, Shirley, NY 11967, USA

**SDS-PAGE Analysis
of Ephx2**



Lane 1: MW Standards; Lane 2: Mouse sEH (2 µg); Lane 3: Mouse sEH (4 µg).
Representative gel image shown; actual purity may vary between each batch.



 Tel: 1-631-559-9269 1-516-512-3133

 Email: info@creative-biomart.com  Fax: 1-631-938-8127

 45-1 Ramsey Road, Shirley, NY 11967, USA