

Active Recombinant Rat Epo protein, His-tagged

Cat. No. Epo-01R Lot. No. (See product label)

SPECIFICATION

Product Overview	Recombinant rat Erythropoietin/EPO Protein (27-192aa), fused to His-tag at C-terminus, was expressed in HEK293 cell and purified by using conventional chromatography techniques.
Species	Rat
Source	HEK293
ProteinLength	27-192 a.a.
Description	Acts as a regulator of erythropoiesis; may facilitate oxygen delivery in response to hypoxia
Form	Liquid
Bio-activity	Measured in a cell proliferation assay using TF-1 human erythroleukemic cells. The ED50 range ≤ 2 ng/mL.
Molecular Mass	19.6 kDa
AA Sequence	APPRLICDSRVLERYILEAKEAENVTMGCAEGPRLSENITVPDTKVNIFYAWKRMKVE EQAVEVWQGLSLLSEAILQAQALQANSSQPPELQLHIDKAISGLRSLTSLLRVLGAQ KELMSPDATQAAPLRTLADTFCKLFRVYSNFLRGKCLKLYTGEACRRGDR
Endotoxin	< 1 EU/ μ g of protein (determined by LAL method)

 Tel: 1-631-559-9269 1-516-512-3133

 Email: info@creative-biomart.com  Fax: 1-631-938-8127

 45-1 Ramsey Road, Shirley, NY 11967, USA

Purity	> 95% by SDS-PAGE
Applications	SDS-PAGE, Bioactivity
Storage	Can be stored at +2 to +8 centigrade for 1 week. For long term storage, aliquot and store at -20 to -80 centigrade. Avoid repeated freezing and thawing cycles.
Concentration	1 mg/mL
Storage Buffer	In Phosphate-Buffered Saline (pH 7.4) containing 10% glycerol

GENE INFORMATION

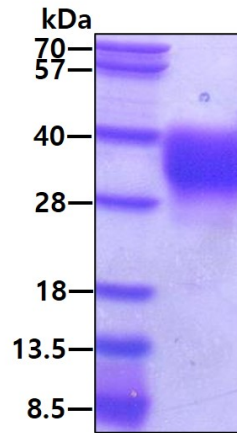
Gene Name	Epo erythropoietin [<i>Rattus norvegicus</i> (Norway rat)]
Official Symbol	Epo
Synonyms	Epo; erythropoietin; erythropoietin
Gene ID	24335
mRNA Refseq	NM_017001
Protein Refseq	NP_058697
UniProt ID	P29676

 Tel: 1-631-559-9269 1-516-512-3133

 Email: info@creative-biomart.com  Fax: 1-631-938-8127

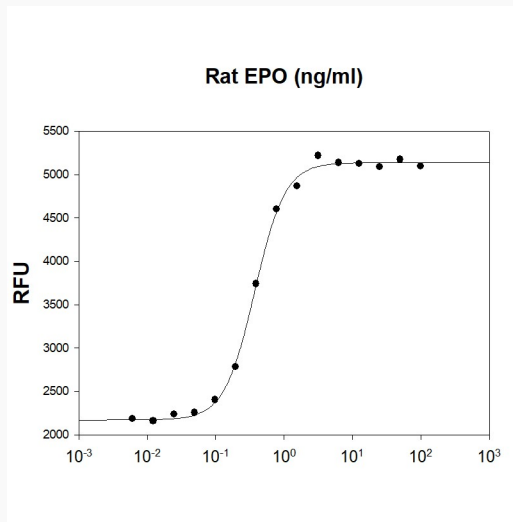
 45-1 Ramsey Road, Shirley, NY 11967, USA

SDS-PAGE



3 µg by SDS-PAGE under reducing condition and visualized by coomassie blue stain.

Biological Activity



Rat Epo stimulates cell proliferation of the TF-1 human erythroleukemic cells. The ED50 range \leq 2 ng/mL.

 Tel: 1-631-559-9269 1-516-512-3133

 Email: info@creative-biomart.com  Fax: 1-631-938-8127

 45-1 Ramsey Road, Shirley, NY 11967, USA