

Active Recombinant Mouse Epo Protein, His-tagged

Cat. No. Epo-022M Lot. No. (See product label)

SPECIFICATION

Product Overview	Recombinant mouse EPO, fused to His-tag at C-terminus, was expressed in insect cell and purified by using conventional chromatography techniques.
Species	Mouse
Source	Insect cells
Description	This gene encodes the glycoprotein hormone erythropoietin that regulates the production of red blood cells and biosynthesis of hemoglobin. The predominant expression of this gene shifts from the liver during fetal development to kidney in adults. A complete lack of the encoded protein causes embryonic lethal anemia in mice. The conditional inactivation of this gene in adult mice results in a chronic, normocytic and normochromic anemia. Transgenic mice expressing the human ortholog of this gene exhibit polycythemia. Alternative splicing results in multiple transcript variants encoding different isoforms.
Form	Liquid
Bio-activity	Measured in a cell proliferation assay using TF-1 human erythroleukemic cells. The ED50 range ≤ 2 ng/mL.
Molecular Mass	19.8 kDa
AA Sequence	MAPPRLICDSRVLERYILEAKEAENVTMGCAEGPRLSENITVPDTKVNFYAWKRMEV EEQAIEVWQGLSLLSEAILQAQALLANSSQPPETLQLHIDKAISGLRSLTSLLRVLGAQ

 Tel: 1-631-559-9269 1-516-512-3133

 Email: info@creative-biomart.com  Fax: 1-631-938-8127

 45-1 Ramsey Road, Shirley, NY 11967, USA

KELMSPDTPPAPLRLTLVDTFCKLFRVYANFLRGKCLKLYTGEVCRRGDR

Endotoxin < 1 EU/μg of protein (determined by LAL method)

Purity > 95% by SDS-PAGE

Applications SDS-PAGE, Bioactivity

Storage Can be stored at +2 to +8 centigrade for 1 week. For long term storage, aliquot and store at -20 to -101 centigrade. Avoid repeated freezing and thawing cycles.

Concentration 0.25 mg/mL (determined by Absorbance at 280nm)

Storage Buffer Phosphate-Buffered Saline (pH 7.4) containing 10% glycerol

GENE INFORMATION

Gene Name Epo erythropoietin [Mus musculus (house mouse)]

Official Symbol Epo

Synonyms Epo; erythropoietin; erythropoietin

Gene ID 13856

mRNA Refseq NM_007942

Protein Refseq NP_031968

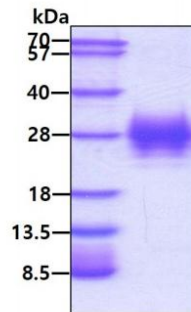
UniProt ID P07321

 Tel: 1-631-559-9269 1-516-512-3133

 Email: info@creative-biomart.com  Fax: 1-631-938-8127

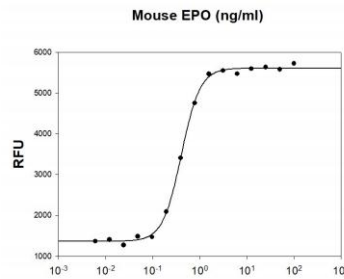
 45-1 Ramsey Road, Shirley, NY 11967, USA

SDS-PAGE



3 μ g by SDS-PAGE under reducing condition and visualized by coomassie blue stain

Biological Activity



Mouse EPO stimulates cell proliferation of the TF-1 human erythroleukemic cells.
The ED50 range \leq 2ng/mL.

 Tel: 1-631-559-9269 1-516-512-3133

 Email: info@creative-biomart.com  Fax: 1-631-938-8127

 45-1 Ramsey Road, Shirley, NY 11967, USA