

Recombinant Human ErbB4 Protein, His-tagged

Cat. No. ErbB4-7283H Lot. No. (See product label)

SPECIFICATION

Product Overview	Recombinant Human ErbB4 protein(Gln26-Arg649), fused with C-terminal His tag, was expressed in HEK293.
Species	Human
Source	HEK293
ProteinLength	Gln26-Arg649
Tag	C-His
Form	Liquid in sterile PBS, pH7.4.
Molecular Mass	The protein has a calculated MW of 71 kDa.
Endotoxin	<1.0EU per 1µg (determined by the LAL method).
Purity	> 90 % as determined by SDS-PAGE.
Storage	Store it under sterile conditions at -80°C. It is recommended that the protein be aliquoted for optimal storage. Avoid repeated freeze-thaw cycles.
Concentration	1.0 mg/ml. Centrifuge the vial at 4°C before opening to recover the entire contents.
Reconstitution	It is recommended that sterile water be added to the vial to prepare a stock solution of

 Tel: 1-631-559-9269 1-516-512-3133

 Email: info@creative-biomart.com  Fax: 1-631-938-8127

 45-1 Ramsey Road, Shirley, NY 11967, USA

0.2 ug/ul. Centrifuge the vial at 4°C before opening to recover the entire contents.

AA Sequence

QSV CAGTENKLSSLS DLEQQYRALRKYYENCEVVMGNLEITSIEHNRDLSFLRSVRE
 VTGYVLVALNQFRYLPLENLRRIIRG TKLYEDRYALAIFLNRYRKDGNFGLQELGLKNL TE
 ILNGGVYVDQNKFLCYADTIHWQDIVRNPWPSNLTLVSTNGSSGCGRCHK SCTGRC
 WGPTENHCQTLTRTVCAEQCDGRCYGPYVSDCCHRECAGGCSGPKD TDCFACM
 NFNDSGACVTQCPQTFVYNPTTFQLEHNFNAKYTYGAFVCVKKCPHNFVVDSSSCV
 RACPSSKMEVEENG IKMCKPCTDICPKACDGIGTGLMSAQTVDSSNIDKFINCTKIN
 GNLIFLVTGIHGDPYNAIEAIDPEKLN VFRTVREITGFLNIQSWPPNMTDFSVFSNLVTI
 GGRVLYSGLSLLILKQQGITS LQFQSLKEISAGNIYITDNSNLCYYHTINWTTLFSTINQ
 RIVIRDNRKAENCTAEGMVCNHL CSSDGCGWGPDPDQCLSCRRFSRGRICIESCNLY
 DGEFREFENG SICVECDPQCEK MEDGLLTCHGPGPDNCTKCSHF KDGPNCVEKCP
 DGLQGANSFIFKYADPDRECHPCHPNCTQG CNGPTSHDCIYYPWTGHSTLPQHAR
 AHHHHHHHHHH

GENE INFORMATION

Gene Name	ERBB4 v-erb-a erythroblastic leukemia viral oncogene homolog 4 (avian) [Homo sapiens]
Official Symbol	ErbB4
Synonyms	ERBB4; v-erb-a erythroblastic leukemia viral oncogene homolog 4 (avian); v erb a avian erythroblastic leukemia viral oncogene homolog like 4; receptor tyrosine-protein kinase erbB-4; proto-oncogene-like protein c-ErbB-4; tyrosine kinase-type cell surface receptor HER4; avian erythroblastic leukemia viral (v-erb-b2) oncogene homolog 4; HER4; p180erbB4; MGC138404;
Gene ID	2066

 Tel: 1-631-559-9269 1-516-512-3133

 Email: info@creative-biomart.com  Fax: 1-631-938-8127

 45-1 Ramsey Road, Shirley, NY 11967, USA

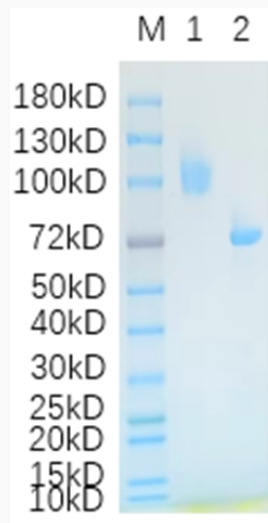
mRNA Refseq [NM_001042599](#)

Protein Refseq [NP_001036064](#)

MIM [600543](#)

UniProt ID [Q15303](#)

SDS-PAGE



Lane 1: ErbB4-7283H; Lane 2: BSA

 Tel: 1-631-559-9269 1-516-512-3133

 Email: info@creative-biomart.com  Fax: 1-631-938-8127

 45-1 Ramsey Road, Shirley, NY 11967, USA