

Recombinant Rat Erbb2 protein, His & GST-tagged

Cat. No. Erbb2-1896R **Lot. No.** (See product label)

SPECIFICATION

Product Overview	Recombinant Rat Erbb2 Protein (Q8K3F9, 380-582aa), was produced in E. coli cells with N-terminal His tag and GST tag.
Species	Rat
Source	E.coli
ProteinLength	380-582 aa
Description	May play a role in cell proliferation and differentiation.
Form	Freeze-dried powder
Molecular Mass	Predicted Molecular Mass: 50.0kDa.
Endotoxin	<1.0EU per 1ug (determined by the LAL method)
Purity	>95%
Characteristic	The isoelectric point is 6.1.
Applications	SDS-PAGE; WB; ELISA; IP.
Stability	The thermal stability is described by the loss rate of the target protein. The loss rate was determined by accelerated thermal degradation test, that is, incubate the protein

 Tel: 1-631-559-9269 1-516-512-3133

 Email: info@creative-biomart.com  Fax: 1-631-938-8127

 45-1 Ramsey Road, Shirley, NY 11967, USA

at 37°C for 48h, and no obvious degradation and precipitation were observed. (Referring from China Biological Products Standard, which was calculated by the Arrhenius equation.) The loss of this protein is less than 5% within the expiration date under appropriate storage condition.

Storage	Avoid repeated freeze/thaw cycles. Store at 2-8°C for one month. Aliquot and store at -80°C for 12 months.
Storage Buffer	Supplied as lyophilized form in PBS, pH7.4, containing 5% sucrose, 0.01% sarcosyl.
Reconstitution	Reconstitute in sterile PBS, pH7.2-pH7.4.

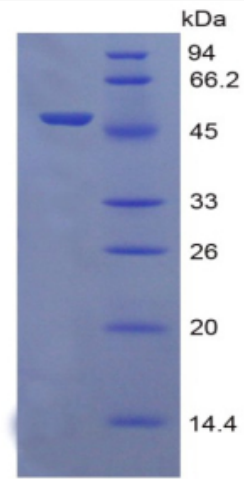
GENE INFORMATION

Gene Name	ErbB2 erb-b2 receptor tyrosine kinase 2 [Rattus norvegicus (Norway rat)]
Official Symbol	ErbB2
Synonyms	Slit1; slit guidance ligand 1; MEGF4; slit homolog 1 protein; multiple EGF-like domains protein 4; multiple epidermal growth factor-like domains 4; multiple epidermal growth factor-like domains protein 4; slit-1
Gene ID	24337
mRNA Refseq	NM_017003.2
Protein Refseq	NP_058699.2
UniProt ID	Q8K3F9

 Tel: 1-631-559-9269 1-516-512-3133

 Email: info@creative-biomart.com  Fax: 1-631-938-8127

 45-1 Ramsey Road, Shirley, NY 11967, USA



15% SDS-PAGE

SDS-PAGE

 Tel: 1-631-559-9269 1-516-512-3133

 Email: info@creative-biomart.com  Fax: 1-631-938-8127

 45-1 Ramsey Road, Shirley, NY 11967, USA