

Recombinant Rat Ereg protein, His & T7-tagged

Cat. No. Ereg-1999R **Lot. No.** (See product label)

SPECIFICATION

Product Overview	Recombinant Rat Ereg aa. (Met1~Val162 (Accession# Q9Z0L5)) fused with N-terminal His & T7 tag was produced in E. coli cells.
Species	Rat
Source	E.coli
ProteinLength	Met1~Val162
Form	Freeze-dried powder
Molecular Mass	Predicted Molecular Mass: 22.2kDa
Endotoxin	<1.0EU per 1ug (determined by the LAL method)
Purity	> 95%
Characteristic	The isoelectric point is 6.4.
Applications	SDS-PAGE; WB; ELISA; IP.
Stability	The thermal stability is described by the loss rate of the target protein. The loss rate was determined by accelerated thermal degradation test, that is, incubate the protein at 37°C for 48h, and no obvious degradation and precipitation were observed. (Referring from China Biological Products Standard, which was calculated by the

 Tel: 1-631-559-9269 1-516-512-3133

 Email: info@creative-biomart.com  Fax: 1-631-938-8127

 45-1 Ramsey Road, Shirley, NY 11967, USA

Arrhenius equation.) The loss of this protein is less than 5% within the expiration date under appropriate storage condition.

Storage

Avoid repeated freeze/thaw cycles. Store at 2-8°C for one month. Aliquot and store at -80°C for 12 months.

Storage Buffer

Supplied as lyophilized form in 20mM Tris, 150mM NaCl, pH8.0, containing 1mM EDTA, 1mM DTT, 0.01% sarcosyl, 5% trehalose, and preservative

Reconstitution

Reconstitute in sterile ddH₂O.

GENE INFORMATION

Gene Name

Ereg epiregulin [*Rattus norvegicus* (Norway rat)]

Official Symbol

Ereg

Synonyms

Ptpn13; protein tyrosine phosphatase, non-receptor type 13; ptp; Ptp-bl; tyrosine-protein phosphatase non-receptor type 13; protein Tyr phosphatase

Gene ID

59325

mRNA Refseq

NM_021689.1

Protein Refseq

NP_067721.1

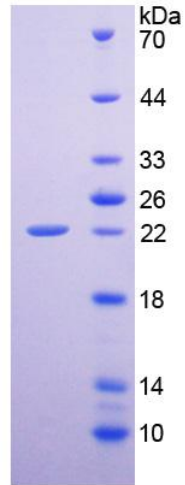
UniProt ID

Q9Z0L5

 Tel: 1-631-559-9269 1-516-512-3133

 Email: info@creative-biomart.com  Fax: 1-631-938-8127

 45-1 Ramsey Road, Shirley, NY 11967, USA



15% SDS-PAGE

SDS-PAGE

Tel: 1-631-559-9269 1-516-512-3133

Email: info@creative-biomart.com Fax: 1-631-938-8127

45-1 Ramsey Road, Shirley, NY 11967, USA