

Recombinant Mouse Erp44 Protein, His-tagged

Cat. No. Erp44-218M Lot. No. (See product label)

SPECIFICATION

Product Overview	Recombinant Mouse Erp44(Met1~Ala322) fused with His tag at N-terminal was expressed in E. coli.
Species	Mouse
Source	E.coli
ProteinLength	Met1~Ala322
Form	PBS, pH7.4, containing 0.01% SKL, 1mM DTT, 5% Trehalose and Proclin300.
Molecular Mass	40.9kDa
Endotoxin	<1.0EU per 1g (determined by the LAL method)
Purity	> 90%
Applications	Positive Control; Immunogen; SDS-PAGE; WB. If bio-activity of the protein is needed, please check active protein.
Stability	The thermal stability is described by the loss rate. The loss rate was determined by accelerated thermal degradation test, that is, incubate the protein at 37 centigrade for 48h, and no obvious degradation and precipitation were observed. The loss rate is less than 5% within the expiration date under appropriate storage condition.

 Tel: 1-631-559-9269 1-516-512-3133

 Email: info@creative-biomart.com  Fax: 1-631-938-8127

 45-1 Ramsey Road, Shirley, NY 11967, USA

Storage Avoid repeated freeze/thaw cycles. Store at 2-8 centigrade for one month. Aliquot and store at -80 centigrade for 12 months.

Reconstitution Reconstitute in PBS or others.

GENE INFORMATION

Gene Name [Erp44 endoplasmic reticulum protein 44 \[Mus musculus \]](#)

Official Symbol [Erp44](#)

Synonyms ERP44; endoplasmic reticulum protein 44; endoplasmic reticulum resident protein 44; ER protein 44; thioredoxin domain-containing protein 4; endoplasmic reticulum resident protein 44kDa; endoplasmic reticulum resident protein ERp44; thioredoxin domain containing 4 (endoplasmic reticulum); Txndc4; AI849526; AL033348; 1110001E24Rik;

Gene ID [76299](#)

mRNA Refseq [NM_029572](#)

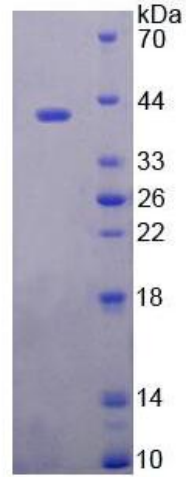
Protein Refseq [NP_083848](#)

UniProt ID [Q9D1Q6](#)

 Tel: 1-631-559-9269 1-516-512-3133

 Email: info@creative-biomart.com  Fax: 1-631-938-8127

 45-1 Ramsey Road, Shirley, NY 11967, USA



15% SDS-PAGE

 Tel: 1-631-559-9269 1-516-512-3133

 Email: info@creative-biomart.com  Fax: 1-631-938-8127

 45-1 Ramsey Road, Shirley, NY 11967, USA