

Recombinant Rat Esam protein, His & S-tagged

Cat. No. Esam-1221R Lot. No. (See product label)

SPECIFICATION

| | |
|-------------------------|---|
| Product Overview | Recombinant Rat Esam aa. (Met31~Ala251 (Accession # Q6AYD4) fused with N-terminal His & S tag was produced in E. coli cells. |
| Species | Rat |
| Source | E.coli |
| ProteinLength | Met31~Ala251 |
| Form | Freeze-dried powder |
| Molecular Mass | 33&35kDa as determined by SDS-PAGE reducing conditions. |
| Endotoxin | <1.0EU per 1g (determined by the LAL method) |
| Purity | >95% |
| Characteristic | The isoelectric point is 6.3. |
| Applications | SDS-PAGE; WB; ELISA; IP. |
| Stability | The thermal stability is described by the loss rate of the target protein. The loss rate was determined by accelerated thermal degradation test, that is, incubate the protein at 37°C for 48h, and no obvious degradation and precipitation were observed. (Referring from China Biological Products Standard, which was calculated by the |

 Tel: 1-631-559-9269 1-516-512-3133

 Email: info@creative-biomart.com  Fax: 1-631-938-8127

 45-1 Ramsey Road, Shirley, NY 11967, USA

Arrhenius equation.) The loss of this protein is less than 5% within the expiration date under appropriate storage condition.

Storage

Avoid repeated freeze/thaw cycles. Store at 2-8°C for one month. Aliquot and store at -80°C for 12 months.

Storage buffer

Supplied as lyophilized form in PBS, pH7.4, containing 5% sucrose, 0.01% sarcosyl.

Reconstitution

Reconstitute in sterile PBS, pH7.2-pH7.4.

GENE INFORMATION

Gene Name

Esam endothelial cell adhesion molecule [*Rattus norvegicus* (Norway rat)]

Official Symbol

Esam

Synonyms

Esam; endothelial cell adhesion molecule; endothelial cell-selective adhesion molecule

Gene ID

300519

mRNA Refseq

NM_001004245.1

Protein Refseq

NP_001004245.1

UniProt ID

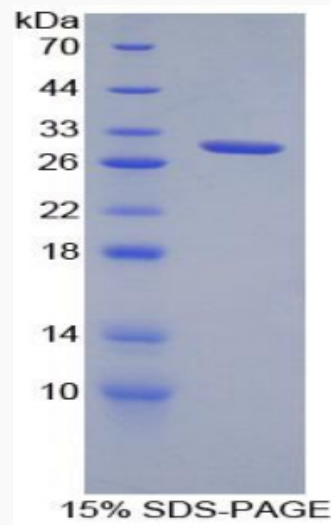
Q6AYD4

 Tel: 1-631-559-9269 1-516-512-3133

 Email: info@creative-biomart.com  Fax: 1-631-938-8127

 45-1 Ramsey Road, Shirley, NY 11967, USA

SDS-PAGE



 Tel: 1-631-559-9269 1-516-512-3133

 Email: info@creative-biomart.com  Fax: 1-631-938-8127

 45-1 Ramsey Road, Shirley, NY 11967, USA