

Recombinant Mouse Cebpd Protein, His/MBP-tagged

Cat. No. Esm1-707M Lot. No. (See product label)

SPECIFICATION

Product Overview	Recombinant Mouse Cebpd(Ala51~Phe251) fused with His/MBP tag at N-terminal was expressed in E. coli.
Species	Mouse
Source	E.coli
ProteinLength	Ala22~Arg184
Form	PBS, pH7.4, containing 0.01% SKL, 1mM DTT, 5% Trehalose and Proclin300.
Molecular Mass	64.3kDa
Endotoxin	<1.0EU per 1ug (determined by the LAL method)
Purity	> 95%
Applications	Positive Control; Immunogen; SDS-PAGE; WB. If bio-activity of the protein is needed, please check active protein
Stability	The thermal stability is described by the loss rate. The loss rate was determined by accelerated thermal degradation test, that is, incubate the protein at 37 centigrade for 48h, and no obvious degradation and precipitation were observed. The loss rate is less than 5% within the expiration date under appropriate storage condition.

 Tel: 1-631-559-9269 1-516-512-3133

 Email: info@creative-biomart.com  Fax: 1-631-938-8127

 45-1 Ramsey Road, Shirley, NY 11967, USA

Storage Avoid repeated freeze/thaw cycles. Store at 2-8 centigrade for one month. Aliquot and store at -80 centigrade for 12 months.

Reconstitution Reconstitute in PBS (pH7.4) to a concentration of 0.1-1.0 mg/mL. Do not vortex.

GENE INFORMATION

Gene Name [Esm1 endothelial cell-specific molecule 1 \[Mus musculus \]](#)

Official Symbol [Esm1](#)

Synonyms ESM1; endothelial cell-specific molecule 1; ESM-1; AV004503; 0610042H23Rik;

Gene ID [71690](#)

mRNA Refseq [NM_023612](#)

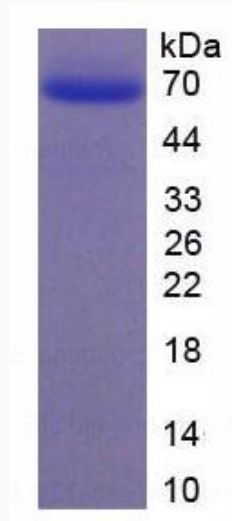
Protein Refseq [NP_076101](#)

UniProt ID [Q9QYY7](#)

 Tel: 1-631-559-9269 1-516-512-3133

 Email: info@creative-biomart.com  Fax: 1-631-938-8127

 45-1 Ramsey Road, Shirley, NY 11967, USA



Tel: 1-631-559-9269 1-516-512-3133

Email: info@creative-biomart.com Fax: 1-631-938-8127

45-1 Ramsey Road, Shirley, NY 11967, USA