

Recombinant Rat Esm1 Protein, His-tagged

Cat. No. Esm1-709R Lot. No. (See product label)

SPECIFICATION

Product Overview	Recombinant Rat Esm1(Ala22~Arg184) fused with His tag at N-terminal was expressed in E. coli.
Species	Rat
Source	E.coli
ProteinLength	Ala22~Arg184
Form	PBS, pH7.4, containing 0.01% SKL, 1mM DTT, 5% Trehalose and Proclin300.
Molecular Mass	19.3kDa
Endotoxin	<1.0EU per 1ug (determined by the LAL method)
Purity	> 95%
Applications	Positive Control; Immunogen; SDS-PAGE; WB. If bio-activity of the protein is needed, please check active protein
Stability	The thermal stability is described by the loss rate. The loss rate was determined by accelerated thermal degradation test, that is, incubate the protein at 37 centigrade for 48h, and no obvious degradation and precipitation were observed. The loss rate is less than 5% within the expiration date under appropriate storage condition.

 Tel: 1-631-559-9269 1-516-512-3133

 Email: info@creative-biomart.com  Fax: 1-631-938-8127

 45-1 Ramsey Road, Shirley, NY 11967, USA

Storage	Avoid repeated freeze/thaw cycles. Store at 2-8 centigrade for one month. Aliquot and store at -80 centigrade for 12 months.
----------------	--

Reconstitution	Reconstitute in PBS or others
-----------------------	-------------------------------

GENE INFORMATION

Gene Name	Esm1 endothelial cell-specific molecule 1 [Rattus norvegicus]
------------------	---

Official Symbol	Esm1
------------------------	----------------------

Synonyms	ESM1; endothelial cell-specific molecule 1; ESM-1 secretory protein; pineal specific PG25 protein; Pg25;
-----------------	--

Gene ID	64536
----------------	-----------------------

mRNA Refseq	NM_022604
--------------------	---------------------------

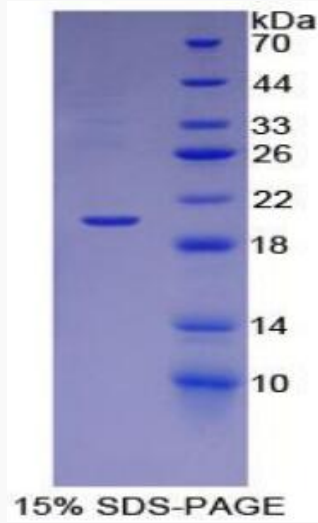
Protein Refseq	NP_072126
-----------------------	---------------------------

UniProt ID	P97682
-------------------	------------------------

 Tel: 1-631-559-9269 1-516-512-3133

 Email: info@creative-biomart.com  Fax: 1-631-938-8127

 45-1 Ramsey Road, Shirley, NY 11967, USA



 Tel: 1-631-559-9269 1-516-512-3133

 Email: info@creative-biomart.com  Fax: 1-631-938-8127

 45-1 Ramsey Road, Shirley, NY 11967, USA