

Recombinant Mouse Esm1 Protein, His-tagged

Cat. No. Esm1-7412M Lot. No. (See product label)

SPECIFICATION

Product Overview	Recombinant mouse Endocan / ESM1 with a His tag was expressed in insect cells.
Species	Mouse
Source	Insect Cells
Description	Involved in angiogenesis; promotes angiogenic sprouting. May have potent implications in lung endothelial cell-leukocyte interactions.
Form	Lyophilized
Molecular Mass	19.07 kDa
AA Sequence	WSAKYAVDCPEHC DKTECRSSLRCKRTVLDDCGCCQVCAAGPGETCYRTVSGMD GVKCGPGLKCHFYSEEDDFGDEF GICKDCPYGTFGMECKETCNCQSGICDRVTGR CLDFPFFQYAAAKSPSRTASHTERDSASGDGNAVREEIGEGNAARPSVMKWLNPR TRHHHHHH
N-terminal Sequence Analysis	WSAKYAVD
Purity	> 95 % by SDS-PAGE and Silver staining
Stability	Shelf life: one year from despatch.

 Tel: 1-631-559-9269 1-516-512-3133

 Email: info@creative-biomart.com  Fax: 1-631-938-8127

 45-1 Ramsey Road, Shirley, NY 11967, USA

Storage Prior to reconstitution store at 2-8 centigrade.
Following reconstitution store undiluted at 2-8 centigrade for one month or (in aliquots) at -20 centigrade for longer.
Avoid repeated freezing and thawing.

Storage Buffer H2O

Reconstitution Restore in water to a concentration of 0.1 mg/mL.

GENE INFORMATION

Gene Name [Esm1 endothelial cell-specific molecule 1 \[Mus musculus \(house mouse\) \]](#)

Official Symbol [Esm1](#)

Synonyms Esm1; endothelial cell-specific molecule 1; ESM-1; AV004503; 0610042H23Rik; endothelial cell-specific molecule 1

Gene ID [71690](#)

mRNA Refseq [NM_023612](#)

Protein Refseq [NP_076101](#)

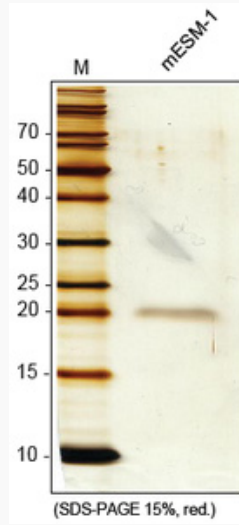
UniProt ID [Q9QYY7](#)

 Tel: 1-631-559-9269 1-516-512-3133

 Email: info@creative-biomart.com  Fax: 1-631-938-8127

 45-1 Ramsey Road, Shirley, NY 11967, USA

SDS-PAGE



 Tel: 1-631-559-9269 1-516-512-3133

 Email: info@creative-biomart.com  Fax: 1-631-938-8127

 45-1 Ramsey Road, Shirley, NY 11967, USA