

Recombinant Mouse Esr1 protein, MBP&His-Avi-tagged

Cat. No. Esr1-1128M Lot. No. (See product label)

SPECIFICATION

Product Overview	Biotinylated Recombinant Mouse Esr1 protein(P19785)(1-599aa), fused with N-terminal MBP tag and C-terminal His and Avi tag, was expressed in E.coli.
Species	Mouse
Source	E.coli
ProteinLength	1-599aa
Conjugation/Label	Biotin
Form	If the delivery form is liquid, the default storage buffer is Tris/PBS-based buffer, 5%-50% glycerol. If the delivery form is lyophilized powder, the buffer before lyophilization is Tris/PBS-based buffer, 6% Trehalose, pH 8.0.
Molecular Mass	114.7 kDa
Purity	Greater than 85% as determined by SDS-PAGE.
Storage	Store at -20°C/-80°C upon receipt, aliquoting is necessary for mutiple use. Avoid repeated freeze-thaw cycles.
Reconstitution	We recommend that this vial be briefly centrifuged prior to opening to bring the contents to the bottom. Please reconstitute protein in deionized sterile water to a concentration of 0.1-1.0 mg/mL.We recommend to add 5-50% of glycerol (final

 Tel: 1-631-559-9269 1-516-512-3133

 Email: info@creative-biomart.com  Fax: 1-631-938-8127

 45-1 Ramsey Road, Shirley, NY 11967, USA

concentration) and aliquot for long-term storage at -20°C/-80°C.

AA Sequence

```

MTMTLHTKASGMALLHQIQGNELEPLNRPQLKMPMERALGEVYVDNSKPTVFNYPE
GAAYEFNAAAAAAAAASAPVYGQSGIAYGPGSEAAAFSANS LGAFPQLNSVSPSPL
MLLHPPPQLSPFLHPHGQQVPYYLENEPSAYAVRDTGPPAFYRSNSDNRRQNGRE
RLSSSNEKGNMIMESAKETRYCAVCNDYASGYHYGVWSCEGCKAFFKR SIQGHND
YMCPATNQCTIDKNRRKSCQACRLRKCYEVGMMKGGIRKDRRGGRMLKHKRQRD
DLEGRNEMGASGDMRAANLWPSPLVIKHTKKNSPALSLTADQMVSALLDAEPPMIY
SEYDPSRPFSEASMMGLLTNLADRELVHMINWAKRVPGFGDLNLHDQVHLLCAW
LEILMIGLVWRSMEHPGKLLFAPNLLLDRNQGKCV EGMVEIFDMLLATSSRFRMMNL
QGEEFVCLKSIILLNSGVYTFLSSTLKSLEEKDHIHRVLDKITDTLIHLMAGLTLQQQ
HRRLAQLLLILSHIRHMSNKGMEHLYNMKCKNVVPLYDLLLEMLDAHRLHAPASRMG
VPPEEPSQTQLATTSSSTAHS LQTYYPPEAEGFPNTI
    
```

GENE INFORMATION

Gene Name [Esr1 estrogen receptor 1 \(alpha\) \[Mus musculus \]](#)

Official Symbol [Esr1](#)

Synonyms ESR1; estrogen receptor 1 (alpha); estrogen receptor; ER; estradiol receptor; nuclear receptor subfamily 3 group A member 1; ERa; ESR; Estr; ER[a]; Estr; Nr3a1; ERalpha; AA420328; AU041214; ER-alpha;

Gene ID [13982](#)

mRNA Refseq [NM_007956](#)

Protein Refseq [NP_031982](#)

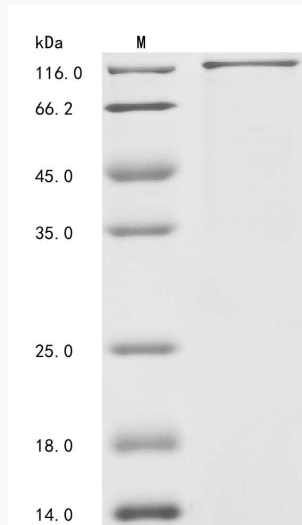
 Tel: 1-631-559-9269 1-516-512-3133

 Email: info@creative-biomart.com  Fax: 1-631-938-8127

 45-1 Ramsey Road, Shirley, NY 11967, USA



SDS-PAGE



Tel: 1-631-559-9269 1-516-512-3133

Email: info@creative-biomart.com Fax: 1-631-938-8127

45-1 Ramsey Road, Shirley, NY 11967, USA