

## Recombinant Mouse Esr1 protein, His & GST-tagged

Cat. No. Esr1-1438M Lot. No. (See product label)

### SPECIFICATION

<b>Product Overview</b>	Recombinant Mouse Esr1 aa. (Ile233~Leu483) fused with N-terminal His & GST tag was produced in E. coli cells.
<b>Species</b>	Mouse
<b>Source</b>	E.coli
<b>ProteinLength</b>	Ile233~Leu483
<b>Description</b>	<p>This gene encodes an estrogen receptor, a member of the nuclear hormone family of intracellular receptors. The encoded protein, activated by the sex hormone estrogen, is a transcription factor composed of several domains important for hormone binding, DNA binding, and activation of transcription. Estrogen and its receptors are essential for sexual development and reproductive function, but also play a role in other tissues such as bone. Similar genes in human have been implicated in pathological processes including breast cancer, endometrial cancer, and osteoporosis. Alternative splicing results in multiple transcript variants.</p>
<b>Form</b>	Freeze-dried powder
<b>Molecular Mass</b>	59kDa as determined by SDS-PAGE reducing conditions.
<b>Endotoxin</b>	<1.0EU per 1g (determined by the LAL method).
<b>Purity</b>	>95%

 Tel: 1-631-559-9269 1-516-512-3133

 Email: [info@creative-biomart.com](mailto:info@creative-biomart.com)  Fax: 1-631-938-8127

 45-1 Ramsey Road, Shirley, NY 11967, USA

<b>Characteristic</b>	The isoelectric point is 9.
<b>Applications</b>	SDS-PAGE; WB; ELISA; IP; CoIP; Purification; Amine Reactive Labeling
<b>Stability</b>	The thermal stability is described by the loss rate. The loss rate was determined by accelerated thermal degradation test, that is, incubate the protein at 37°C for 48h, and no obvious degradation and precipitation were observed. The loss rate is less than 5% within the expiration date under appropriate storage condition.
<b>Storage</b>	Avoid repeated freeze/thaw cycles. Store at 2-8°C for one month. Aliquot and store at -80°C for 12 months.
<b>Concentration</b>	200g/mL
<b>Storage buffer</b>	20mM Tris, 150mM NaCl, pH8.0, containing 1mM EDTA, 1mM DTT, 0.01% sarcosyl, 5%Trehalose and Proclin300.
<b>Reconstitution</b>	Reconstitute in 20mM Tris, 150mM NaCl (pH8.0) to a concentration of 0.1-1.0mg/mL. Do not vortex.

## GENE INFORMATION

<b>Gene Name</b>	<a href="#">Esr1 estrogen receptor 1 (alpha) [ Mus musculus (house mouse) ]</a>
<b>Official Symbol</b>	<a href="#">Esr1</a>
<b>Synonyms</b>	ER; ERa; ESR; Estr; Estra; Nr3a1; ERalpha; ER-alpha; C-terminally-truncated estrogen receptor alpha product-4; C-terminally-truncated estrogen receptor alpha product-5; C-terminally-truncated estrogen receptor alpha product-6; C-terminally-truncated estrogen receptor alpha product-7; estradiol receptor; nuclear receptor

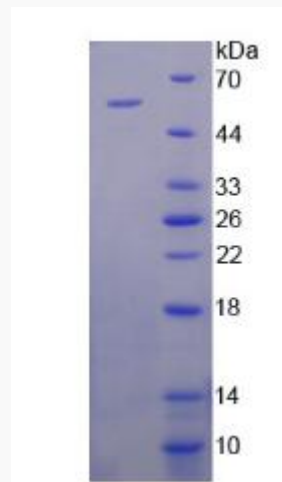
 Tel: 1-631-559-9269 1-516-512-3133

 Email: [info@creative-biomart.com](mailto:info@creative-biomart.com)  Fax: 1-631-938-8127

 45-1 Ramsey Road, Shirley, NY 11967, USA

subfamily 3 group A member 1; estrogen receptor

<b>Gene ID</b>	13982
<b>mRNA Refseq</b>	NM_001302531.1
<b>Protein Refseq</b>	NP_001289460.1
<b>UniProt ID</b>	P19785

**SDS-PAGE** Tel: 1-631-559-9269 1-516-512-3133 Email: [info@creative-biomart.com](mailto:info@creative-biomart.com)  Fax: 1-631-938-8127 45-1 Ramsey Road, Shirley, NY 11967, USA