

Recombinant Mouse Ets1 protein, His & T7-tagged

Cat. No. Ets1-1647M **Lot. No.** (See product label)

SPECIFICATION

Product Overview	Recombinant Mouse Ets1 aa. (Met1~Arg243 (Accession # P27577)) fused with N-terminal His & T7 tag was produced in E. coli cells.
Species	Mouse
Source	E.coli
ProteinLength	Met1~Arg243
Form	Freeze-dried powder
Molecular Mass	40kDa as determined by SDS-PAGE reducing conditions.
Endotoxin	<1.0EU per 1ug (determined by the LAL method)
Purity	>90%
Applications	SDS-PAGE; WB; ELISA; IP.
Stability	The thermal stability is described by the loss rate. The loss rate was determined by accelerated thermal degradation test, that is, incubate the protein at 37°C for 48h, and no obvious degradation and precipitation were observed. The loss rate is less than 5% within the expiration date under appropriate storage condition.
Storage	Avoid repeated freeze/thaw cycles. Store at 2-8°C for one month. Aliquot and store at

 Tel: 1-631-559-9269 1-516-512-3133

 Email: info@creative-biomart.com  Fax: 1-631-938-8127

 45-1 Ramsey Road, Shirley, NY 11967, USA

-80°C for 12 months.

Storage buffer

Supplied as lyophilized form in 20mM Tris, 150mM NaCl, pH8.0, containing 1mM EDTA, 1mM DTT, 0.01% sarcosyl, 5% trehalose, and preservative.

Reconstitution

Reconstitute in sterile ddH₂O.

Isoelectric Point

4.6

GENE INFORMATION

Gene Name

[Ets1 E26 avian leukemia oncogene 1, 5' domain \[Mus musculus \(house mouse\) \]](#)

Official Symbol

[Ets1](#)

Synonyms

Ets1; E26 avian leukemia oncogene 1, 5' domain; vs; Tpl1; Ets-1; AI196000; AI448617; D230050P06; protein C-ets-1; avian erythroblastosis virus E26 oncogene 1; p54; tumor progression locus 1

Gene ID

[23871](#)

mRNA Refseq

[NM_011808.2](#)

Protein Refseq

[NP_035938.2](#)

UniProt ID

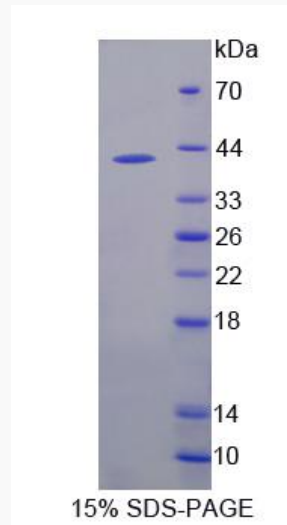
[P27577](#)

 Tel: 1-631-559-9269 1-516-512-3133

 Email: info@creative-biomart.com  Fax: 1-631-938-8127

 45-1 Ramsey Road, Shirley, NY 11967, USA

SDS-PAGE



 Tel: 1-631-559-9269 1-516-512-3133

 Email: info@creative-biomart.com  Fax: 1-631-938-8127

 45-1 Ramsey Road, Shirley, NY 11967, USA