

Recombinant Mouse Evi protein, His&Myc-tagged

Cat. No. Evi-6421M Lot. No. (See product label)

SPECIFICATION

Product Overview Recombinant Mouse Evi protein(P70429)(1-414aa), fused with N-terminal His tag and C-terminal Myc tag, was expressed in E.coli.

Species Mouse

Source E.coli

ProteinLength 1-414aa

Form If the delivery form is liquid, the default storage buffer is Tris/PBS-based buffer, 5%-50% glycerol. If the delivery form is lyophilized powder, the buffer before lyophilization is Tris/PBS-based buffer, 6% Trehalose, pH 8.0.

Molecular Mass 51.8 kDa

Purity Greater than 85% as determined by SDS-PAGE.

Storage Store at -20°C/-80°C upon receipt, aliquoting is necessary for mutiple use. Avoid repeated freeze-thaw cycles.

Reconstitution We recommend that this vial be briefly centrifuged prior to opening to bring the contents to the bottom. Please reconstitute protein in deionized sterile water to a concentration of 0.1-1.0 mg/mL. We recommend to add 5-50% of glycerol (final concentration) and aliquot for long-term storage at -20°C/-80°C.

 Tel: 1-631-559-9269 1-516-512-3133

 Email: info@creative-biomart.com  Fax: 1-631-938-8127

 45-1 Ramsey Road, Shirley, NY 11967, USA

AA Sequence

MSEQSICQARASVMVYDDTSKKWVPIKPGQQGFSRINIYHNTASSTFRVVGVLQD
QQVVINYSIVKGLKYNQATPTFHQWRDARQVYGLNFASKEEATTFSNAMLFALNIMN
SQEGGPSTQRQVQNGPSPEEMDIQRRQVMEQQHRQESLERRISATGPILPPGHPS
SAASTTLSCSGPPPPPPPPVPPPPTGSTPPPPPPPLPAGGAQGTNHDESSASGLAAA
LAGAKLRRVQRPEDASGGSSPSGTSKSDANRASSGGGGGGLMEEMNKLLAKRRK
AASQTDKPADRKEDESQTEDPSTSPSPGTRATSQPPNSSEAGRKPWERSNSVEKP
VSSLLSRTPSVAKSPEAKSPLQSQPHSRVKPAGSVNDVGLDALDLDRMKQEILEEVV
RELHKVKEEIIDAIRQELSGISTT

GENE INFORMATION

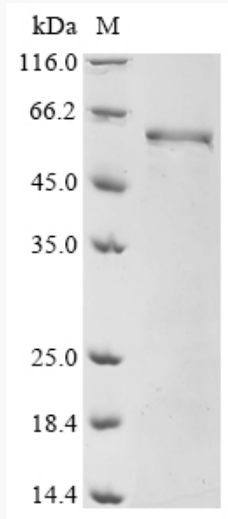
Gene Name	Evl Ena-vasodilator stimulated phosphoprotein [Mus musculus]
Official Symbol	Evl
Synonyms	EVL ; Ena-vasodilator stimulated phosphoprotein; ena/VASP-like protein; A1528774;
Gene ID	14026
mRNA Refseq	NM_001163394
Protein Refseq	NP_001156866

 Tel: 1-631-559-9269 1-516-512-3133

 Email: info@creative-biomart.com  Fax: 1-631-938-8127

 45-1 Ramsey Road, Shirley, NY 11967, USA

SDS-PAGE



 Tel: 1-631-559-9269 1-516-512-3133

 Email: info@creative-biomart.com  Fax: 1-631-938-8127

 45-1 Ramsey Road, Shirley, NY 11967, USA