

Recombinant Mouse Extl2 Protein (Asn43-Met330), N-His tagged

Cat. No. Extl2-5458M Lot. No. (See product label)

SPECIFICATION

| | |
|-------------------------|--|
| Product Overview | Recombinant mouse Extl2 (Asn43-Met330) fused with the N-terminus His tag was expressed in mammalian cells. |
| Species | Mouse |
| Source | Mammalian Cells |
| ProteinLength | Asn43-Met330 |
| Description | Enables acetylgalactosaminyltransferase activity; glycosaminoglycan binding activity; and manganese ion binding activity. Involved in N-acetylglucosamine metabolic process and UDP-N-acetylgalactosamine metabolic process. Predicted to be located in cytosol; endoplasmic reticulum; and nucleoplasm. Is expressed in several structures, including central nervous system; genitourinary system; liver; lung; and spleen. Orthologous to human EXTL2 (exostosin like glycosyltransferase 2). |
| Form | Lyophilized powder/frozen liquid |
| Molecular Mass | 31.68 kDa |
| Purity | > 90 % as determined by SDS-PAGE |
| Notes | For research use only. |

 Tel: 1-631-559-9269 1-516-512-3133

 Email: info@creative-biomart.com  Fax: 1-631-938-8127

 45-1 Ramsey Road, Shirley, NY 11967, USA

| | |
|-----------------------|---|
| Storage | Use a manual defrost freezer and avoid repeated freeze thaw cycles. Store at 2 to 8 centigrade for one week. Store at -20 to -80 centigrade for twelve months from the date of receipt. |
| Storage Buffer | Supplied as solution form in PBS or lyophilized from PBS. |
| Reconstitution | Reconstitute in sterile water for a stock solution. |
| Shipping | They are shipped out with dry ice/blue ice unless customers require otherwise. |

GENE INFORMATION

| | |
|------------------------|--|
| Gene Name | Extl2 exostosin-like glycosyltransferase 2 [Mus musculus (house mouse)] |
| Official Symbol | Extl2 |
| Synonyms | Extl2; exostosin-like glycosyltransferase 2; 3000001D04Rik; exostosin-like 2; EXT-related protein 2; alpha-1, 4-N-acetylhexosaminyltransferase EXTL2; alpha-GalNAcT EXTL2; exostoses (multiple)-like 2; exostoses-like 2; exotoses (multiple)-like 2; glucuronyl-galactosyl-proteoglycan 4-alpha-N-acetylglucosaminyltransferase; EC 2.4.1.223 |
| Gene ID | 58193 |
| mRNA Refseq | NM_021388 |
| Protein Refseq | NP_067363 |
| UniProt ID | Q9ES89 |

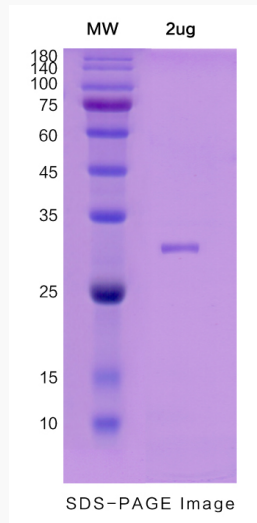
 Tel: 1-631-559-9269 1-516-512-3133

 Email: info@creative-biomart.com  Fax: 1-631-938-8127

 45-1 Ramsey Road, Shirley, NY 11967, USA



SDS-PAGE



Tel: 1-631-559-9269 1-516-512-3133

Email: info@creative-biomart.com Fax: 1-631-938-8127

45-1 Ramsey Road, Shirley, NY 11967, USA