

Recombinant Human F11R protein, His-tagged

Cat. No. F11R-3547H **Lot. No.** (See product label)

SPECIFICATION

Product Overview	Recombinant Human F11R protein(Q9Y624-1)(Ser28-Val238.), fused with C-terminal His tag, was expressed in HEK293.
Species	Human
Source	HEK293
ProteinLength	Ser28-Val238.
Tag	C-His
Form	Supplied as 0.22µm filtered solution in PBS (pH 7.4).
Bio-activity	Immobilized Human JAM-A, His Tag at 1ug/ml (100ul/Well) on the plate. Dose response curve for Anti-JAM-A Antibody, hFc Tag with the EC50 of 2.4ng/ml determined by ELISA.
Molecular Mass	The protein has a predicted MW of 24 kDa. Due to glycosylation, the protein migrates to 28-35 kDa based on Tris-Bis PAGE result.
Endotoxin	Less than 1EU per µg by the LAL method.
Purity	> 95% as determined by Tris-Bis PAGE
Storage	Valid for 12 months from date of receipt when stored at -80°C. Recommend to aliquot

 Tel: 1-631-559-9269 1-516-512-3133

 Email: info@creative-biomart.com  Fax: 1-631-938-8127

 45-1 Ramsey Road, Shirley, NY 11967, USA

the protein into smaller quantities for optimal storage. Please do not repeated freeze-thaw cycles.

Reconstitution

It is recommended that sterile water be added to the vial to prepare a stock solution of 0.2 ug/ul. Centrifuge the vial at 4°C before opening to recover the entire contents.

GENE INFORMATION

Gene Name [F11R F11 receptor \[Homo sapiens \]](#)

Official Symbol [F11R](#)

Synonyms

F11R; F11 receptor; JAM1, junctional adhesion molecule 1; junctional adhesion molecule A; CD321; JAM 1; JAM A; JAMA; JCAM; PAM 1; platelet F11 receptor; platelet adhesion molecule 1; junctional adhesion molecule 1; JAM; KAT; JAM1; PAM-1;

Gene ID [50848](#)

mRNA Refseq [NM_016946](#)

Protein Refseq [NP_058642](#)

MIM [605721](#)

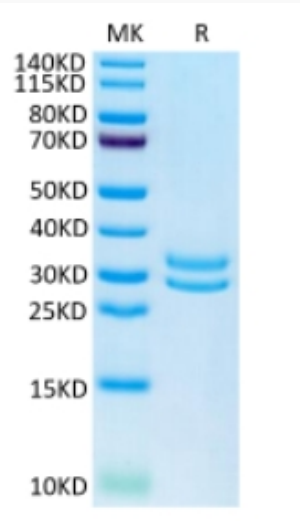
UniProt ID [Q9Y624](#)

 Tel: 1-631-559-9269 1-516-512-3133

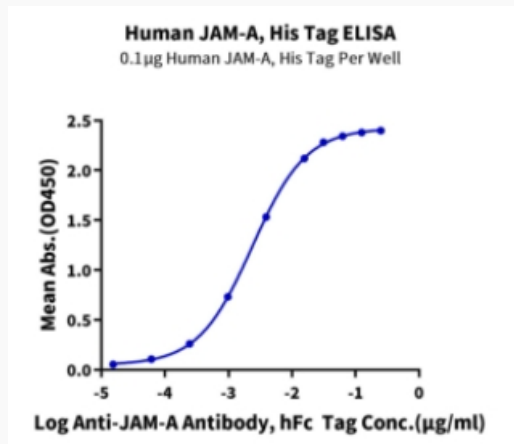
 Email: info@creative-biomart.com  Fax: 1-631-938-8127

 45-1 Ramsey Road, Shirley, NY 11967, USA

Tris-Bis PAGE



ELISA Data



 Tel: 1-631-559-9269 1-516-512-3133

 Email: info@creative-biomart.com  Fax: 1-631-938-8127

 45-1 Ramsey Road, Shirley, NY 11967, USA