

Recombinant Human F11R Protein (Met1-Val238), C-His tagged

Cat. No. F11R-4802H Lot. No. (See product label)

SPECIFICATION

Product Overview	Recombinant human F11R (Met1-Val238) fused with the C-terminal His tag was expressed in Mammalian cells.
Species	Human
Source	Mammalian Cells
ProteinLength	Met1-Val238
Form	Lyophilized powder/frozen liquid
Molecular Mass	26.62 kDa
Endotoxin	< 1.0 EU/μg of the protein as determined by the LAL method.
Purity	>90% as determined by SDS-PAGE.
Notes	For research use only.
Storage	Use a manual defrost freezer and avoid repeated freeze thaw cycles. Store at 2 to 8 centigrade for one week. Store at -20 to -80 centigrade for twelve months from the date of receipt.
Storage Buffer	Supplied as solution form in PBS or lyophilized from PBS.

 Tel: 1-631-559-9269 1-516-512-3133

 Email: info@creative-biomart.com  Fax: 1-631-938-8127

 45-1 Ramsey Road, Shirley, NY 11967, USA

Reconstitution Reconstitute in sterile water for a stock solution.

Shipping They are shipped out with dry ice/blue ice unless customers require otherwise.

GENE INFORMATION

Gene Name [F11R F11 receptor \[Homo sapiens \(human\) \]](#)

Official Symbol [F11R](#)

Synonyms F11R; F11 receptor; JAM1, junctional adhesion molecule 1; junctional adhesion molecule A; CD321; JAM 1; JAM A; JAMA; JCAM; PAM 1; platelet F11 receptor; platelet adhesion molecule 1; junctional adhesion molecule 1; JAM; KAT; JAM1; PAM-1;

Gene ID [50848](#)

mRNA Refseq [NM_016946](#)

Protein Refseq [NP_058642](#)

MIM [605721](#)

UniProt ID [Q9Y624](#)

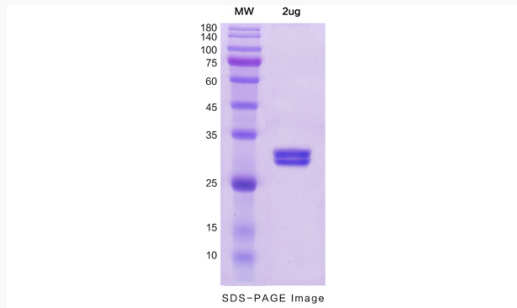
 Tel: 1-631-559-9269 1-516-512-3133

 Email: info@creative-biomart.com  Fax: 1-631-938-8127

 45-1 Ramsey Road, Shirley, NY 11967, USA



SDS-PAGE



Tel: 1-631-559-9269 1-516-512-3133

Email: info@creative-biomart.com Fax: 1-631-938-8127

45-1 Ramsey Road, Shirley, NY 11967, USA