

Active Recombinant Human F11R, Fc-tagged

Cat. No. F11R-69H Lot. No. (See product label)

SPECIFICATION

Product Overview	Active Recombinant Human F11R(Met 1-Ala 242)(NP_058642.1) precursor was expressed in HEK293 with the fused Fc region of human IgG1 at the C-terminus.
Species	Human
Source	HEK293
ProteinLength	1-242 aa
Form	Lyophilized from sterile 100mM Glycine, 10mM NaCl, 50mM Tris, pH 7.5.
Bio-activity	Measured by the ability of the immobilized protein to support the adhesion of Jurkat human acute T cell leukemia cells. When 8×10^4 cells/well are added to JAM-A-Fc coated plates (2.5 μ g/mL, 100 μ L/well)in the presence of 20 ng/mL PMA, approximately 30-40% will adhere after 30 minutes at 37°C.
Molecular Mass	The mature recombinant human JAM-A/Fc chimera is a disulfide-linked homodimeric protein. The reduced monomer comprises 453 amino acids and has a calculated molecular mass of 50 kDa. As a result of glycosylation, the rh JAM-A/Fc monomer migrates as an approximately 61 kDa protein in SDS-PAGE under reducing conditions.
Endotoxin	< 1 EU/g as determined by LAL test.
Purity	> 95 % as determined by SDS-PAGE and SEC-HPLC Analysis.

 Tel: 1-631-559-9269 1-516-512-3133

 Email: info@creative-biomart.com  Fax: 1-631-938-8127

 45-1 Ramsey Road, Shirley, NY 11967, USA

Storage Store it under sterile conditions at -20°C to -80°C upon receiving. Recommend to aliquot the protein into smaller quantities for optimal storage. Avoid repeated freeze-thaw cycles.

Reconstitution It is recommended that sterile water be added to the vial to prepare a stock solution of 0.2 ug/ul. Centrifuge the vial at 4°C before opening to recover the entire contents.

GENE INFORMATION

Gene Name F11R F11 receptor [Homo sapiens]

Official Symbol F11R

Synonyms F11R; F11 receptor; JAM1, junctional adhesion molecule 1; junctional adhesion molecule A; CD321; JAM 1; JAM A; JAMA; JCAM; PAM 1; platelet F11 receptor; platelet adhesion molecule 1; junctional adhesion molecule 1; JAM; KAT; JAM1; PAM-1;

Gene ID 50848

mRNA Refseq NM_016946


Protein Refseq NP_058642

MIM 605721

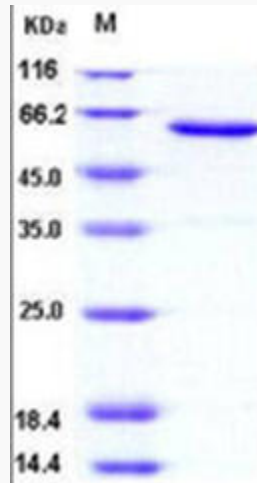
UniProt ID Q9Y624

 Tel: 1-631-559-9269 1-516-512-3133

 Email: info@creative-biomart.com  Fax: 1-631-938-8127

 45-1 Ramsey Road, Shirley, NY 11967, USA

SDS-PAGE



 Tel: 1-631-559-9269 1-516-512-3133

 Email: info@creative-biomart.com  Fax: 1-631-938-8127

 45-1 Ramsey Road, Shirley, NY 11967, USA