

## Recombinant Human F11 Receptor, His-tagged

**Cat. No.** F11R-788H    **Lot. No.** (See product label)

### SPECIFICATION

**Product Overview**      Recombinant Human F11R protein (Gln 24- Tyr 213), fused with the His tag at the N-terminus, was expressed in *Human Cells*.

**Species**                      Human

**Source**                        Human Cells

**ProteinLength**              24-213 a.a.

**Description**                As a typetransmembrane receptor belonging to the immunoglobulin superfamily, the human JAM-A, also known as platelet adhesion molecule 1(PAM-1) and platelet F11 receptor, is the firstly identified member of the Junctional Adhesion Molecule (JAM) family comprising at least three members. JAM-A is specifically localized in tight junctions of epithelial and endothelial cells and is involved in the regulation of junctional integrity and permeability by serving as a physical barrier in a homophilic manner. JAM-A is also expressed on the surface of hematopoietic cells, such as platelets and leukocytes, and acts as a ligand for integrin LFA-1 or a platelet receptor, consequently plays key roles in a variety of cellular processes, including platelet aggregation, leukocyte transmigration, and angiogenesis. In addition, JAM-A has also been implicated in the attachment of reovirus that causes diarrhea in human.

**Molecular Mass**            The mature recombinant human JAM-A/Fc chimera is a disulfide-linked homodimeric protein. The reduced monomer comprises 453 amino acids and has a calculated molecular mass of 50 kDa. As a result of glycosylation, the rh JAM-A/Fc monomer

 Tel: 1-631-559-9269    1-516-512-3133

 Email: [info@creative-biomart.com](mailto:info@creative-biomart.com)     Fax: 1-631-938-8127

 45-1 Ramsey Road, Shirley, NY 11967, USA

|                              |   |
|------------------------------|---|
|                              | migrates as an approximately 61kDa protein in SDS-PAGE under reducing conditions.   |
| <b>Predicted N Terminal</b>  | Ser 28.   |
| <b>Purity</b>                | > 95% as determined by SDS-PAGE.  |
| <b>Formulation</b>           | Lyophilized from sterile 100mM Glycine, 10mM NaCl, 50mM Tris, pH7.5.  |
| <b>Endotoxin</b>             | < 1.0 EU per µg of the protein as determined by the LAL method.   |
| <b>Reconstitution</b>        | A hardcopy of COA with reconstitution instruction is sent along with the products. Please refer to it for detailed information.   |
| <b>Storage And Stability</b> | Samples are stable for up to twelve months from date of receipt at -70°C. It is recommended that the protein be aliquoted for optimal storage. Avoid repeated freeze-thaw cycles. |

## GENE INFORMATION

|                    |  |
|--------------------|--|
| <b>Gene Name</b>   | F11R F11 receptor [ Homo sapiens ]   |
| <b>Synonyms</b>    | F11R; F11 receptor; JAM; KAT; JAM1; JAMA; JCAM; CD321; PAM-1; junctional adhesion molecule 1; Junctional adhesion molecule A; JAM-A; Junctional adhesion molecule 1; Platelet adhesion molecule 1; JAM-1; OTTHUMP00000027880; OTTHUMP00000027881; CD321 antigen; Platelet F11 receptor |
| <b>Gene ID</b>     | 50848  |
| <b>mRNA Refseq</b> | NM_016946  |

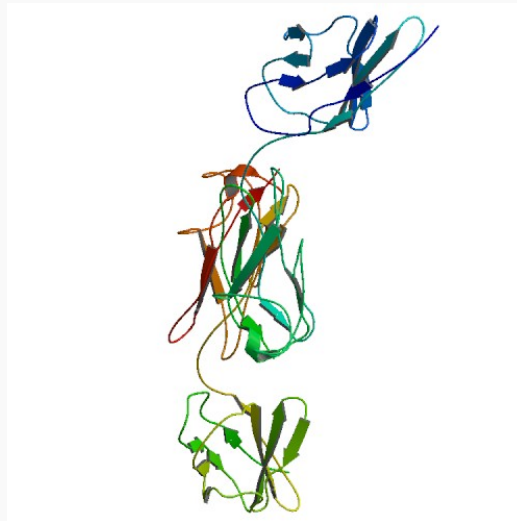
 Tel: 1-631-559-9269 1-516-512-3133

 Email: [info@creative-biomart.com](mailto:info@creative-biomart.com)  Fax: 1-631-938-8127

 45-1 Ramsey Road, Shirley, NY 11967, USA

|                            |  |
|----------------------------|--|
| <b>Protein Refseq</b>      | <a href="#">NP_058642</a>  |
| <b>MIM</b>                 | <a href="#">605721</a>   |
| <b>UniProt ID</b>          | <a href="#">Q9Y624</a>   |
| <b>Chromosome Location</b> | 1q21.2-q21.3   |
| <b>Pathway</b>             | Cell adhesion molecules (CAMs); Epithelial cell signaling in Helicobacter pylori infection; Leukocyte transendothelial migration; Tight junction; Cell-cell adhesion systems; Hemostasis; Integrin cell surface interactions; Signaling in Immune system |
| <b>Function</b>            | protein binding  |

**PDB rendering based on 1nbq**



 Tel: 1-631-559-9269 1-516-512-3133

 Email: [info@creative-biomart.com](mailto:info@creative-biomart.com)  Fax: 1-631-938-8127

 45-1 Ramsey Road, Shirley, NY 11967, USA