

Active Recombinant Human F11R, His-tagged

Cat. No. F11R-790H **Lot. No.** (See product label)

SPECIFICATION

Product Overview	Active Recombinant Human F11R(Met 1-Ala 242)(NP_058642.1) precursor was expressed in HEK293 with a polyhistidine tag at the C-terminus.
Species	Human
Source	HEK293
ProteinLength	1-242 aa
Form	Lyophilized from sterile PBS, pH 7.4.
Bio-activity	Measured by the ability of the immobilized protein to support the adhesion of Jurkat human acute T cell leukemia cells. When 8×10^4 cells/well are added to JAM-A-Fc coated plates (2.5µg/mL, 100 µL/well)in the presence of 20 ng/mL PMA, approximately 30-40% will adhere after 30 minutes at 37°C.
Molecular Mass	The secreted recombinant human JAM-A comprises 227 amino acids and has a calculated molecular mass of 25 kDa. As a result of glycosylation, it migrates with the molecular mass of approximately 28-32 kDa in SDS-PAGE under reducing conditions.
Endotoxin	< 1 EU/g as determined by LAL test.
Purity	> 97 % as determined by SDS-PAGE
Storage	Store it under sterile conditions at -20°C to -80°C upon receiving. Recommend to

 Tel: 1-631-559-9269 1-516-512-3133

 Email: info@creative-biomart.com  Fax: 1-631-938-8127

 45-1 Ramsey Road, Shirley, NY 11967, USA

aliquot the protein into smaller quantities for optimal storage. Avoid repeated freeze-thaw cycles.

Reconstitution

It is recommended that sterile water be added to the vial to prepare a stock solution of 0.2 ug/ul. Centrifuge the vial at 4°C before opening to recover the entire contents.

GENE INFORMATION

Gene Name [F11R F11 receptor \[Homo sapiens \]](#)

Official Symbol [F11R](#)

Synonyms

F11R; F11 receptor; JAM1, junctional adhesion molecule 1; junctional adhesion molecule A; CD321; JAM 1; JAM A; JAMA; JCAM; PAM 1; platelet F11 receptor; platelet adhesion molecule 1; junctional adhesion molecule 1; JAM; KAT; JAM1; PAM-1;

Gene ID [50848](#)

mRNA Refseq [NM_016946](#)

Protein Refseq [NP_058642](#)

MIM [605721](#)

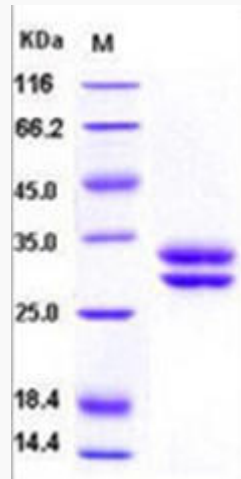
UniProt ID [Q9Y624](#)

 Tel: 1-631-559-9269 1-516-512-3133

 Email: info@creative-biomart.com  Fax: 1-631-938-8127

 45-1 Ramsey Road, Shirley, NY 11967, USA

SDS-PAGE



 Tel: 1-631-559-9269 1-516-512-3133

 Email: info@creative-biomart.com  Fax: 1-631-938-8127

 45-1 Ramsey Road, Shirley, NY 11967, USA