

## Recombinant Human F12 Protein, GST-tagged

Cat. No. F12-3606H Lot. No. (See product label)

### SPECIFICATION

<b>Product Overview</b>	Human F12 full-length ORF ( AAH12390, 1 a.a. - 300 a.a.) recombinant protein with GST-tag at N-terminal.
<b>Species</b>	Human
<b>Source</b>	Wheat Germ
<b>Description</b>	<p>This gene encodes coagulation factor XII which circulates in blood as a zymogen. This single chain zymogen is converted to a two-chain serine protease with an heavy chain (alpha-factor XIIa) and a light chain. The heavy chain contains two fibronectin-type domains, two epidermal growth factor (EGF)-like domains, a kringle domain and a proline-rich domain, whereas the light chain contains only a catalytic domain. On activation, further cleavages takes place in the heavy chain, resulting in the production of beta-factor XIIa light chain and the alpha-factor XIIa light chain becomes beta-factor XIIa heavy chain. Prekallikrein is cleaved by factor XII to form kallikrein, which then cleaves factor XII first to alpha-factor XIIa and then to beta-factor XIIa. The active factor XIIa participates in the initiation of blood coagulation, fibrinolysis, and the generation of bradykinin and angiotensin. It activates coagulation factors VII and XI. Defects in this gene do not cause any clinical symptoms and the sole effect is that whole-blood clotting time is prolonged. [provided by RefSeq, Jul 2008]</p>
<b>Molecular Mass</b>	58.74 kDa

 Tel: 1-631-559-9269 1-516-512-3133

 Email: [info@creative-biomart.com](mailto:info@creative-biomart.com)  Fax: 1-631-938-8127

 45-1 Ramsey Road, Shirley, NY 11967, USA

<b>AA Sequence</b>	MPAQPAPPKPQPTTRTPPQSQTPGALPAKREQPPSLTRNGPLSCGQRLRKSLSM TRVVGGLVALRGAPYIAALYWGHSCAGSLIAPCWVLTAAHCLQDRPAPEDLTVVL GQERRNHSCEPCQTLAVRSYRLHEAFSPVSYQHDLALLRLQEDADGSCALLSPYVQ PVCLPSGAARPSETTLCQVAGWGHQFEGAEYASFLQEAQVPFLSLERCSAPDVH GSSILPGMLCAGFLEGGTDACQGDSGGPLVCEQAAERRLTLQGIISWGS GCGDR NKPGVYTDVAYYLAWIREHTVS
<b>Applications</b>	Enzyme-linked Immunoabsorbent Assay Western Blot (Recombinant protein) Antibody Production Protein Array
<b>Notes</b>	Best use within three months from the date of receipt of this protein.
<b>Storage</b>	Store at -80 centigrade. Aliquot to avoid repeated freezing and thawing.
<b>Storage Buffer</b>	50 mM Tris-HCl, 10 mM reduced Glutathione, pH=8.0 in the elution buffer.

## GENE INFORMATION

<b>Gene Name</b>	F12 coagulation factor XII (Hageman factor) [ Homo sapiens ]
<b>Official Symbol</b>	F12
<b>Synonyms</b>	F12; coagulation factor XII (Hageman factor); coagulation factor XII; Hageman factor; beta-factor XIIa part 1; beta-factor XIIa part 2; coagulation factor XIIa heavy chain; coagulation factor XIIa light chain; HAF; HAE3; HAEX;
<b>Gene ID</b>	2161
<b>mRNA Refseq</b>	NM_000505

 Tel: 1-631-559-9269 1-516-512-3133

 Email: [info@creative-biomart.com](mailto:info@creative-biomart.com)  Fax: 1-631-938-8127

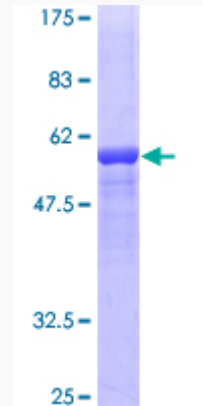
 45-1 Ramsey Road, Shirley, NY 11967, USA

Protein Refseq NP\_000496

MIM 610619

UniProt ID P00748

Quality Control  
Testing



12.5% SDS-PAGE Stained with Coomassie Blue.

Tel: 1-631-559-9269 1-516-512-3133

Email: [info@creative-biomart.com](mailto:info@creative-biomart.com) Fax: 1-631-938-8127

45-1 Ramsey Road, Shirley, NY 11967, USA