

## Recombinant Human F13A1 Protein, His-tagged

Cat. No. F13A1-1332H Lot. No. (See product label)

### SPECIFICATION

<b>Product Overview</b>	Recombinant Human F13A1 Protein is produced by E. coli expression system. This protein is fused with a His tag.
<b>Species</b>	Human
<b>Source</b>	E.coli
<b>ProteinLength</b>	39-732 aa
<b>Form</b>	Lyophilized powder, in 20 mM PB, 150 mM NaCl, pH 8.0, with 5% mannitol and 5% trehalose.
<b>Molecular Mass</b>	80.4 kDa
<b>AA Sequence</b>	<p>MGVNLQEFLNVTSVHLFKERWDTNKVDHHTDKYENNKLIVRRGQSFYVQIDFSRPY  DPRRDLFRVEYVIGRYPQENKGTYPVPIVSELQSGKWGAKIVMREDRSVRLSIQSS  PKCIVGKFRMYVAVWTPYGVLRTRSRNPETDTYILFNPWCEDDAVYLDNEKEREEYV  LNDIGVIFYGEVNDIKTRSWSYGFEDGILDTCLYVMDRAQMDLSGRGNPIKVS RVG  SAMVNAKDDEGLVVGSDNIIYAYGVPPSAWTGSVDILLEYSSENPVRYGQCWVF  AGVFNTFLRCLGIPARIVTNYFSAHDNDANLQMDIFLEEDGNVNSKLTKDSVWNYHC  WNEAWMTRPDLPGVFGGWQAVDSTPQENS DGM YRCGPASVQAIKHGHVCFQFD  APFVFAEVNSDLIYITAKKDGTHVVENVDATHIGKLIVTKQIGGDGMMDITDTYKFQE  GQEEERLALETALMYGAKKPLNTEGVMKSRSNVDMDFEVENAVLGKDFKLSITFRN  NSHNRYTITAYLSANITFYTGVPKAEFKKETFDTVLEPLSFKKEAVLIQAGEYMGQ LLE  QASLHFFVTARINETRDVLAKQKSTVLTPEIIIKVRGTQVVGSDMTVTVQFTNPLKET</p>

 Tel: 1-631-559-9269 1-516-512-3133

 Email: [info@creative-biomart.com](mailto:info@creative-biomart.com)  Fax: 1-631-938-8127

 45-1 Ramsey Road, Shirley, NY 11967, USA



LRNVVHLDGPGVTRPMKKMFREIRPNSTVQWEEVCRPWVSGHRKLIASMSDSL  
RHVYGELDVQIQRRPSMLEHHHHHH

**Endotoxin** <1.0EU per 1µg (determined by the LAL method)

**Purity** >90%, by SDS-PAGE

**Storage** Store at 2-8 centigrade for one week. Aliquot and store at -80 centigrade for 12 months. Avoid repeated freeze-thaw cycles.

**Reconstitution** Reconstitute in deionized water to a concentration of 0.1-1.0 mg/mL. Do not vortex.

## GENE INFORMATION

**Gene Name** F13A1 coagulation factor XIII, A1 polypeptide [ Homo sapiens ]

**Official Symbol** F13A1

**Synonyms** F13A1; F13A; TGase; factor XIIIa; fibrinolygase; FSF, A subunit;

**Gene ID** 2162

**mRNA Refseq** NM\_000129

**Protein Refseq** NP\_000120

**MIM** 134570

**UniProt ID** P00488

Tel: 1-631-559-9269 1-516-512-3133

Email: [info@creative-biomart.com](mailto:info@creative-biomart.com) Fax: 1-631-938-8127

45-1 Ramsey Road, Shirley, NY 11967, USA

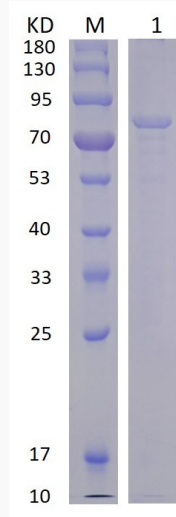


Fig 1. 15% SDS-PAGE analysis of purified F13A1 (CBB stained)  
Lane M: Protein Marker Lane 1: protein (0.8 ug)