

Native Human Coagulation Factor II (thrombin)

Cat. No. F2-5285H Lot. No. (See product label)

SPECIFICATION

Product Overview	Native Human F2 was expressed in human plasma.
Species	Human
Source	Human Plasma
Description	F2 is proteolytically cleaved to form thrombin in the first step of the coagulation cascade which ultimately results in the stemming of blood loss. F2 also plays a role in maintaining vascular integrity during development and postnatal life. Mutations in F2 lead to various forms of thrombosis and dysprothrombinemia.
Form	Liquid in 0.1 M NaH ₂ PO ₄ , pH 6.5.
Concentration	5.0 mg/ml
Molecular Weight	34.3 kDa
Specific Activity	Determined using a fibrinogen clotting assay.
Storage	Store in working aliquots at -20°C. Avoid repeated freeze-thaw cycles.
Pathways	Angiotensin receptor Tie2-mediated signaling; Blood Clotting Cascade; Cell surface interactions at the vascular wall; Class A/1 (Rhodopsin-like receptors); Common Pathway; Complement and Coagulation Cascades; Diabetes pathways; FOXA2 and FOXA3 transcription factor networks; Extrinsic Pathway; Formation of

 Tel: 1-631-559-9269 1-516-512-3133

 Email: info@creative-biomart.com  Fax: 1-631-938-8127

 45-1 Ramsey Road, Shirley, NY 11967, USA

FibrinClot (Clotting Cascade); Hemostasis; Intrinsic Pathway; Regulation of actincytoskeleton; Selenium Pathway; Signal Transduction

GENE INFORMATION

Gene Name [F2 coagulation factor II \(thrombin\) \[Homosapiens \]](#)

Official Symbol [F2](#)

Synonyms [F2](#); [coagulation factor II \(thrombin\)](#); [PT](#); [prothrombin](#); [serineprotease](#); [OTTHUMP00000197117](#); [OTTHUMP00000197118](#); [OTTHUMP00000233661](#); [prothrombin B-chain](#); [EC 3.4.21.5](#); [EC 3.4.21](#); [Prothrombin](#); [Coagulation factorII](#); [Activation peptide fragment 1](#); [Activation peptide fragment 2](#); [Thrombinlight chain](#); [Thrombin heavy chain](#)

Gene ID [2147](#)

mRNA Refseq [NM_000506](#)

Protein Refseq [NP_000497](#)

MIM [176930](#)

UniProt ID [P00734](#)

Chromosome Location [11p11](#)

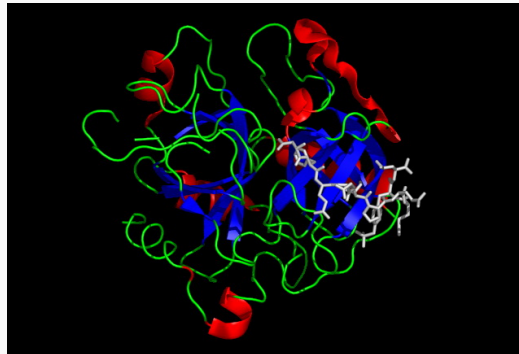
Function [peptidaseactivity](#); [protein binding](#); [serine-type endopeptidase activity](#); [heparin binding](#); [calcium ion binding](#); [growth factor activity](#); [receptor binding](#); [contributes toreceptor binging](#); [thrombospondin receptor activity](#)

 Tel: 1-631-559-9269 1-516-512-3133

 Email: info@creative-biomart.com  Fax: 1-631-938-8127

 45-1 Ramsey Road, Shirley, NY 11967, USA

The structure of human thrombin in complex with the inhibitor hirudin.



 Tel: 1-631-559-9269 1-516-512-3133

 Email: info@creative-biomart.com  Fax: 1-631-938-8127

 45-1 Ramsey Road, Shirley, NY 11967, USA