

Recombinant Human F2RL1 Protein, His-tagged

Cat. No. F2RL1-2177H Lot. No. (See product label)

SPECIFICATION

Product Overview	Recombinant Human F2RL1 Protein (Val309-Tyr397) with a N-His tag was expressed in E. coli.
Species	Human
Source	E.coli
ProteinLength	Val309-Tyr397
Description	This gene encodes a member of the G-protein coupled receptor 1 family of proteins. The encoded cell surface receptor is activated through proteolytic cleavage of its extracellular amino terminus, resulting in a new amino terminus that acts as a tethered ligand that binds to an extracellular loop domain. Activation of the receptor has been shown to stimulate vascular smooth muscle relaxation, dilate blood vessels, increase blood flow, and lower blood pressure. This protein is also important in the inflammatory response, as well as innate and adaptive immunity.
Form	Freeze-dried powder
Molecular Mass	Predicted Molecular Mass: 13.8 kDa Accurate Molecular Mass: 14 kDa
Endotoxin	<1.0 EU per 1g (determined by the LAL method).
Purity	> 95%

 Tel: 1-631-559-9269 1-516-512-3133

 Email: info@creative-biomart.com  Fax: 1-631-938-8127

 45-1 Ramsey Road, Shirley, NY 11967, USA

Applications	Positive Control; Immunogen; SDS-PAGE; WB.
Stability	The thermal stability is described by the loss rate. The loss rate was determined by accelerated thermal degradation test, that is, incubate the protein at 37 centigrade for 48h, and no obvious degradation and precipitation were observed. The loss rate is less than 5% within the expiration date under appropriate storage condition.
Storage	Avoid repeated freeze/thaw cycles. Store at 2-8 centigrade for one month. Aliquot and store at -80 centigrade for 12 months.
Storage Buffer	20mM Tris, 150mM NaCl, pH8.0, containing 1mM EDTA, 1mM DTT, 0.01% SKL, 5% Trehalose and Proclin300.
Reconstitution	Reconstitute in 20mM Tris, 150mM NaCl (pH8.0) to a concentration of 0.1-1.0 mg/mL. Do not vortex.

GENE INFORMATION

Gene Name	F2RL1 F2R like trypsin receptor 1 [Homo sapiens (human)]
Official Symbol	F2RL1
Synonyms	F2r11; F2R like trypsin receptor 1; Par2; Par-2; proteinase-activated receptor 2 Proteinase-activated receptor-2, G protein-coupled receptor 11 coagulation factor II (thrombin) receptor-like 1 coagulation factor II receptor-like 1 thrombin receptor-like 1
Gene ID	2150
mRNA Refseq	NM_005242

 Tel: 1-631-559-9269 1-516-512-3133

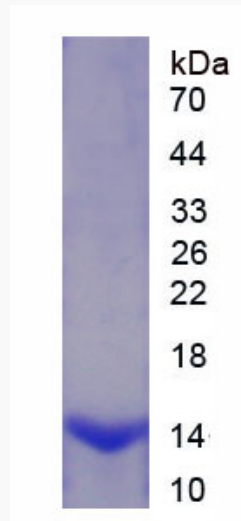
 Email: info@creative-biomart.com  Fax: 1-631-938-8127

 45-1 Ramsey Road, Shirley, NY 11967, USA

Protein Refseq NP_005233

MIM 600933

UniProt ID P55085



 Tel: 1-631-559-9269 1-516-512-3133

 Email: info@creative-biomart.com  Fax: 1-631-938-8127

 45-1 Ramsey Road, Shirley, NY 11967, USA