

Recombinant Human F2RL1 Protein, GST-tagged

Cat. No. F2RL1-3615H Lot. No. (See product label)

SPECIFICATION

Product Overview	Human F2RL1 full-length ORF (AAH12453, 1 a.a. - 397 a.a.) recombinant protein with GST-tag at N-terminal.
Species	Human
Source	Wheat Germ
Description	This gene encodes a member of the G-protein coupled receptor 1 family of proteins. The encoded cell surface receptor is activated through proteolytic cleavage of its extracellular amino terminus, resulting in a new amino terminus that acts as a tethered ligand that binds to an extracellular loop domain. Activation of the receptor has been shown to stimulate vascular smooth muscle relaxation, dilate blood vessels, increase blood flow, and lower blood pressure. This protein is also important in the inflammatory response, as well as innate and adaptive immunity. [provided by RefSeq, Jun 2016]
Molecular Mass	69.41 kDa
AA Sequence	MRSPSAAWLLGAAILLAASLSCSGTIQGTNRSSKGRSLIGKVDGTSHVTGKGVTVET VFSVDEFSASVLTGKLTTVFLPIVYTIVFVGLPSNGMALWVFLFRTKKKHPAVIYMA NLALADLLSVIWFPLKIAYHIHGNWYIYGEALCNVLIGFFYGNMYCSILFMTCLSVQRY WVIVNPMGHSRKKANIAIGISLAIWLLILLVTIPLYVVKQTIFIPALNITTCHDVLPEQLLV GDMFNFLSLAIGVFLFPAFLTASAYVLMIRMLRSSAMDENSEKKRKRAIKLIVTLAM YLICFTPSNLLL VVHYFLIKSQGQSHVYALYIVALCLSTLNSCIDPFVYYFVSHDFRDH

 Tel: 1-631-559-9269 1-516-512-3133

 Email: info@creative-biomart.com  Fax: 1-631-938-8127

 45-1 Ramsey Road, Shirley, NY 11967, USA

AKNALLCRSVRTVKQMQLVSLTSKKHSRESSSYSSSSTTVKTSY

Applications

Enzyme-linked Immunoabsorbent Assay
 Western Blot (Recombinant protein)
 Antibody Production
 Protein Array

Notes

Best use within three months from the date of receipt of this protein.

Storage

Store at -80 centigrade. Aliquot to avoid repeated freezing and thawing.

Storage Buffer

50 mM Tris-HCl, 10 mM reduced Glutathione, pH=8.0 in the elution buffer.

GENE INFORMATION

Gene Name

F2RL1 coagulation factor II (thrombin) receptor-like 1 [Homo sapiens]

Official Symbol

F2RL1

Synonyms

PAR2; GPR11; F2RL1; coagulation factor II (thrombin) receptor-like 1

Gene ID

2150

mRNA Refseq

NM_005242

Protein Refseq

NP_005233

MIM

600933

UniProt ID

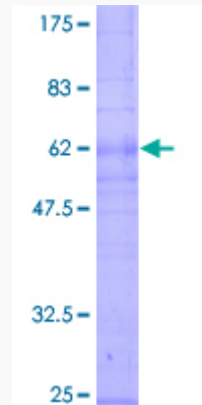
P55085

 Tel: 1-631-559-9269 1-516-512-3133

 Email: info@creative-biomart.com  Fax: 1-631-938-8127

 45-1 Ramsey Road, Shirley, NY 11967, USA

**Quality Control
Testing**



12.5% SDS-PAGE Stained with Coomassie Blue.

 Tel: 1-631-559-9269 1-516-512-3133

 Email: info@creative-biomart.com  Fax: 1-631-938-8127

 45-1 Ramsey Road, Shirley, NY 11967, USA