

## Recombinant Human F2RL1 Protein, GST-Tagged

Cat. No. F2RL1-3616H Lot. No. (See product label)

### SPECIFICATION

<b>Product Overview</b>	Recombinant Human F2RL1 Protein, GST-Tagged was expressed in Wheat Germ cell
<b>Species</b>	Human
<b>Source</b>	Wheat Germ
<b>Description</b>	This gene encodes a member of the G-protein coupled receptor 1 family of proteins. The encoded cell surface receptor is activated through proteolytic cleavage of its extracellular amino terminus, resulting in a new amino terminus that acts as a tethered ligand that binds to an extracellular loop domain. Activation of the receptor has been shown to stimulate vascular smooth muscle relaxation, dilate blood vessels, increase blood flow, and lower blood pressure. This protein is also important in the inflammatory response, as well as innate and adaptive immunity.
<b>Molecular Mass</b>	37.95 kDa
<b>AA Sequence</b>	LIGKVDGTSHVTGKGVTVETVFSVDEFSSASVLTGKLTTFVFLPIVYTIIVFVGLPSNGM ALWVFLFRTRKKKHPAVIYMANLALADLLSVIWFPLKIAYHIHGNNWIYGEALCN
<b>Applications</b>	Enzyme-linked Immunoabsorbent Assay. Western Blot (Recombinant protein). Antibody Production. Protein Array
<b>Notes</b>	Best use within three months from the date of receipt of this protein.

 Tel: 1-631-559-9269 1-516-512-3133

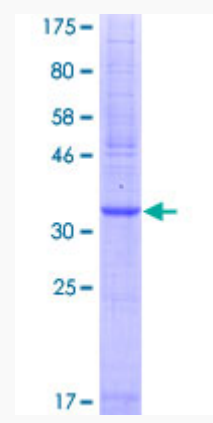
 Email: [info@creative-biomart.com](mailto:info@creative-biomart.com)  Fax: 1-631-938-8127

 45-1 Ramsey Road, Shirley, NY 11967, USA

<b>Storage</b>	Store at -80°C. Aliquot to avoid repeated freezing and thawing.
<b>Storage Buffer</b>	50 mM Tris-HCl, 10 mM reduced Glutathione, pH=8.0 in the elution buffer.
<b>Purification</b>	Glutathione Sepharose 4 Fast Flow

## GENE INFORMATION

<b>Gene Name</b>	F2RL1 F2R like trypsin receptor 1 [ Homo sapiens (human) ]
<b>Official Symbol</b>	F2RL1
<b>Synonyms</b>	PAR2; GPR11
<b>Gene ID</b>	2150
<b>mRNA Refseq</b>	NM_005242.6
<b>Protein Refseq</b>	NP_005233.4
<b>MIM</b>	600933





12.5% SDS-PAGE Stained with Coomassie Blue.

 Tel: 1-631-559-9269 1-516-512-3133

 Email: [info@creative-biomart.com](mailto:info@creative-biomart.com)  Fax: 1-631-938-8127

 45-1 Ramsey Road, Shirley, NY 11967, USA