

## Active Recombinant Human F2RL1 Full Length Transmembrane protein(Nanodisc)

Cat. No. F2RL1-395H Lot. No. (See product label)

### SPECIFICATION

<b>Product Overview</b>	Recombinant Human F2RL1 Full Length Transmembrane protein(P55085), was expressed in HEK293.
<b>Species</b>	Human
<b>Source</b>	HEK293
<b>Form</b>	Lyophilized from nanodisc solubilization buffer (20 mM Tris-HCl, 150 mM NaCl, pH 8.0). Normally 5% – 8% trehalose is added as protectants before lyophilization. Please see Certificate of Analysis for specific instructions.
<b>Bio-activity</b>	Elisa plates were pre-coated with Flag Tag F2RL1-Nanodisc (0.2µg/per well). Serial diluted anti-Flag monoclonal antibody solutions were added, washed, and incubated with secondary antibody before Elisa reading. From above data, the EC50 for anti-Flag monoclonal antibody binding with F2RL1-Nanodisc is 2.32ng/ml.
<b>Molecular Mass</b>	The human full length F2RL1 protein has a MW of 44.1 kDa.
<b>Storage</b>	Store at -20°C to -80°C for 12 months in lyophilized form. After reconstitution, if not intended for use within a month, aliquot and store at -80°C (Avoid repeated freezing and thawing). Lyophilized proteins are shipped at ambient temperature.
<b>Reconstitution</b>	It is recommended that sterile water be added to the vial to prepare a stock solution of 0.2 ug/ul. Centrifuge the vial at 4°C before opening to recover the entire contents.

 Tel: 1-631-559-9269 1-516-512-3133

 Email: [info@creative-biomart.com](mailto:info@creative-biomart.com)  Fax: 1-631-938-8127

 45-1 Ramsey Road, Shirley, NY 11967, USA

**Full Length** Full L.

## GENE INFORMATION

**Gene Name** F2RL1 coagulation factor II (thrombin) receptor-like 1 [ Homo sapiens ]

**Official Symbol** F2RL1

**Synonyms** PAR2; GPR11

**Gene ID** 2150

**mRNA Refseq** NM\_005242.4

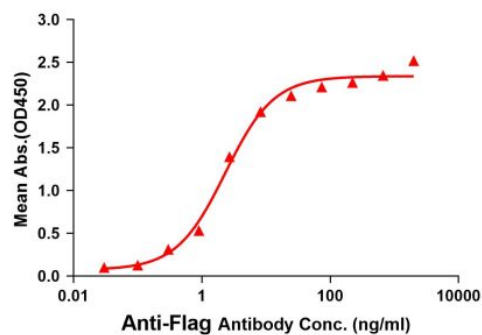
**Protein Refseq** NP\_005233.3

**MIM** 600933

**UniProt ID** P55085

### Activity

ELISA assay to evaluate F2RL1-Nanodisc  
0.2µg Human F2RL1-Nanodisc per well

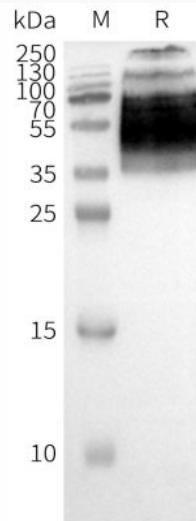


Tel: 1-631-559-9269 1-516-512-3133

Email: [info@creative-biomart.com](mailto:info@creative-biomart.com) Fax: 1-631-938-8127

45-1 Ramsey Road, Shirley, NY 11967, USA

**Western blot**



 Tel: 1-631-559-9269 1-516-512-3133

 Email: [info@creative-biomart.com](mailto:info@creative-biomart.com)  Fax: 1-631-938-8127

 45-1 Ramsey Road, Shirley, NY 11967, USA