

Recombinant Dog F8 protein, His-tagged

Cat. No. F8-1920D Lot. No. (See product label)

SPECIFICATION

Product Overview	Recombinant Dog F8 aa. (Met2191~Cys2337 (Accession # O18806)) fused with N-terminal His tag was produced in E. coli cells.
Species	Dog
Source	E.coli
ProteinLength	Met2191~Cys2337
Form	Freeze-dried powder
Molecular Mass	Predicted Molecular Mass: 18.2kDa.
Endotoxin	<1.0EU per 1ug (determined by the LAL method)
Purity	>95%
Characteristic	The isoelectric point is 10.1.
Applications	SDS-PAGE; WB; ELISA; IP.
Stability	The thermal stability is described by the loss rate of the target protein. The loss rate was determined by accelerated thermal degradation test, that is, incubate the protein at 37°C for 48h, and no obvious degradation and precipitation were observed. (Referring from China Biological Products Standard, which was calculated by the

 Tel: 1-631-559-9269 1-516-512-3133

 Email: info@creative-biomart.com  Fax: 1-631-938-8127

 45-1 Ramsey Road, Shirley, NY 11967, USA

Arrhenius equation.) The loss of this protein is less than 5% within the expiration date under appropriate storage condition.

Storage

Avoid repeated freeze/thaw cycles. Store at 2-8°C for one month. Aliquot and store at -80°C for 12 months.

Storage Buffer

Supplied as lyophilized form in PBS, pH7.4, containing 1mM DTT, 5% trehalose, 0.01% sarcosyl and preservative.

Reconstitution

Reconstitute in sterile PBS, pH7.2-pH7.4.

GENE INFORMATION

Gene Name

F8 coagulation factor VIII [*Canis lupus familiaris* (dog)]

Official Symbol

F8

Synonyms

MYH7; myosin heavy chain 7; CMH1; MPD1; SPMD; SPMM; CMD1S; MYHCB; myosin-7; cardiac muscle myosin heavy chain 7 beta; myHC-beta; myhc-slow; myopathy, distal 1; myosin 7; myosin heavy chain beta-subunit; myosin heavy chain slow isoform; myosin heavy chain, cardiac muscle beta isoform; myosin, heavy chain 7, cardiac muscle, beta; myosin, heavy polypeptide 7, cardiac muscle, beta; rhabdomyosarcoma antigen MU-RMS-40.7A

Gene ID

403875

mRNA Refseq

NM_001003212.1

Protein Refseq

NP_001003212.1

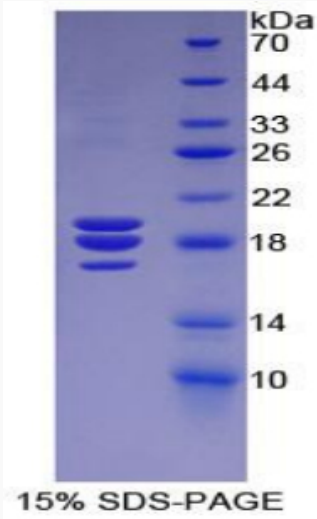
UniProt ID

O18806

 Tel: 1-631-559-9269 1-516-512-3133

 Email: info@creative-biomart.com  Fax: 1-631-938-8127

 45-1 Ramsey Road, Shirley, NY 11967, USA



SDS-PAGE

 Tel: 1-631-559-9269 1-516-512-3133

 Email: info@creative-biomart.com  Fax: 1-631-938-8127

 45-1 Ramsey Road, Shirley, NY 11967, USA